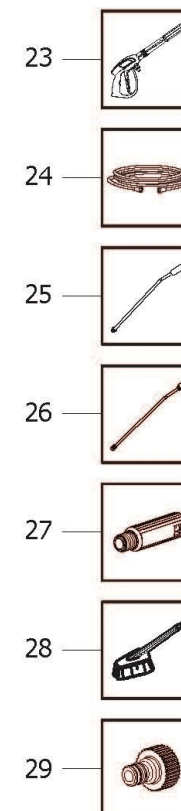
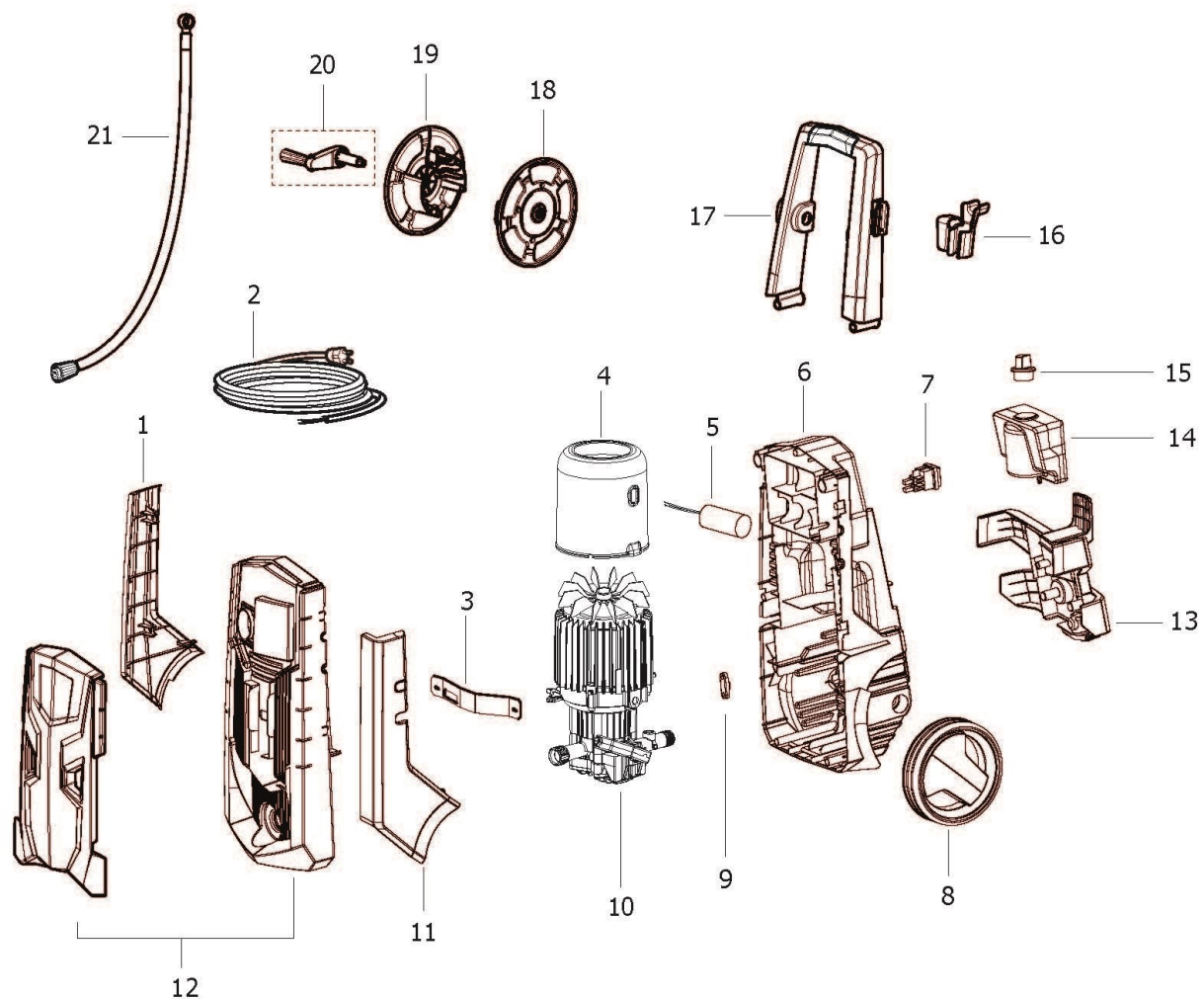


D81020036C/01



IDROPULTRICE KLS 1680 GOLD PLUS 230-240/50 (9068011900)
HIGH PRESSUE WASHER KLS 1680 GOLD PLUS 230-240/50 (9068011900)

IDRO KLS 1680 GOLD PLUS 230-240/50 (9068011900)

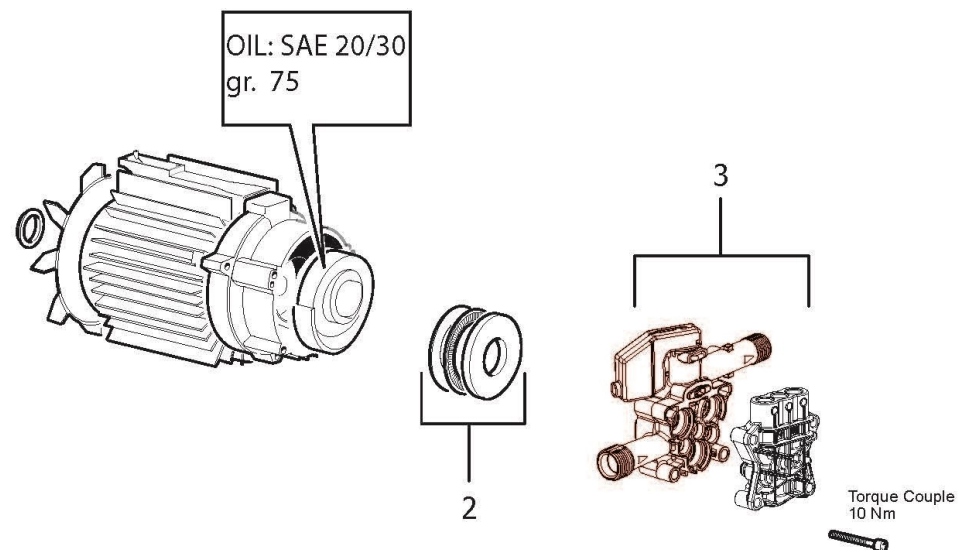
D81020036C/01

| Pos. | componente | Descrizione | Description | Qta |
|------|------------|---|--|-----|
| 1 | 0477062100 | GUSCIO LATERALE SX -GR RAL.7015 (PANT.446) | LATERAL LEFT SHELL -GREY RAL.7015 (PANT.446)- | 1 |
| 2 | 0456052900 | CAVO H05VV-F 3X1 MT.5,4 SP.SCHUKO F/F C/COPRIFASTO | CABLE H05VV-F 3X1 MT.5,4 SCHUKO PLUG F/F | 1 |
| 3 | 1003010100 | FASCIA FISSAGGIO MOTOPOMPA INDUZ. | FIXING BAND FOR INDUCTION MOTOR | 1 |
| 4 | 0466009700 | CONVOGLIATORE MOTORE 110H80 (D.142) | AIR CONVEYOR FOR MOTOR 110H80 (D.142) | 1 |
| 5 | 0434006700 | CONDENSATORE 32mF 450V F/M | CAPACITOR 32mF 450V | 1 |
| 6 | 0477062400 | CARENATURA POSTERIORE -GR- RAL.7015 (PANT.446) | BACK SIDE CABINET -GREY RAL.7015 (PANT.446)- (IN | 1 |
| 7 | 1410015300 | INTERRUTTORE 0/1 PULS.NERI PUSH/BOTTON IP55 12/10 | SWITCH 0/1 BLACK BOTTON IP55 12/10 | 1 |
| 8 | 2810012600 | RUOTA RIVESTITA -GR- RAL.7015 (PANT.446) | GREY RAL.7015 (PANT.446) WHEEL W/BLACK TREAD | 2 |
| 9 | 2434008300 | FERMACAVO PARETE FISSA | CABLE HOOK | 1 |
| 10 | 7301102900 | MOTOP.PT'03 110h100 230-240/50 D.12 9GR45 TS IN.1,7 | MTP PT'03 110h100 230-240/50 D.12 9GR45 TS IN.1, | 1 |
| 11 | 0477062200 | GUSCIO LATERALE DX -GR- RAL.7015 (PANR.446) | LATERAL RIGHT SHELL -GREY RAL.7015 (PANT.446)- | 1 |
| 12 | 0477062300 | ASSIEME CAREN.+COPERT.ANT. KLS INDUZ. -GR- | ASSEMBLY FRONT PLASTIC COVERS KLS -GREY- (INDU | 1 |
| 13 | 0477066800 | PORTAACCESSORI -GR- RAL.7015 (PANT.446) | GREY ACCESSORY HOLDER -RAL.7015 (PANT.446)- | 1 |
| 14 | 3029005900 | SERBATOIO -B- TRASP | TANK | 1 |
| 15 | 3200023900 | TAPPO SERBATOIO -N- | BLACK PLUG D.30 FOR TANK | 1 |
| 16 | 0477073700 | PORTA PISTOLA BIT105 PER KLS -GR- RAL.7015 | BIT105 GUN HOLDER FOR KLS -GREY RAL.7015- | 1 |
| 17 | 1411011200 | ASSIEME MANICO ALTO KLS(X AVV.) + PLACCHETTA -A- | HANDLE FOR HOSE REEL KLS + ORANGE GRIP | 1 |
| 18 | 0602015800 | SEMIAVV.LATO INGRESSO VERS.'11 | BLACK HALF HOSE SIDE REEL '11 | 1 |
| 19 | 0602015900 | SEMIAVV.LATO MANOVELLA VERS.'11 | BLACK HALF LEVER SIDE REEL '11 | 1 |
| 20 | 1804001000 | ASSIEME MANOVELLA C/PERNO L=85 +IMP.LUNGA '11 -N- | KIT HANDLE LONG VERSION '11 (L=85) -BLACK- | 1 |
| 21 | 3208158800 | TUBO 1/4 22.5MPa L=750 R1 X COLL.AVV.'10/POMPA | 1/4 HOSE 22.5MPa L=750 R1 FOR CONNECTION HOS | 1 |
| 23 | 2410033000 | PISTOLA BIT105 3000PSI C/RACC. G1/4M - M22X1,5F | GUN BIT105 3000PSI W/CONNECTIONS G1/4M - M2 | 1 |
| 24 | 3208156900 | TUBO 1/4 23MPa L=8000 R1 RACC.INTEGR.X AVV.'10-1/4 | HOSE 1/4 R1 23MPa L=8000 INTEGRAL COUPLING-1/ | 1 |

IDROPULITRICE KLS 1680 GOLD PLUS 230-240/50 (9068011900)
HIGH PRESSUE WASHER KLS 1680 GOLD PLUS 230-240/50 (9068011900)

| | | | | |
|----|------------|--|---|---|
| 25 | 3301160900 | LANCIA L=440 INCLINATA S/COPERTURA A/B M22 D.0.97 (| INCLINED LANCE L=440 HI/LO M22 D.0.97 (025) WIT | 1 |
| 26 | 3301160500 | LANCIA ROTOX L=430 INCLINATA S/COPERTURA M22 028 | INCLINED ROTOX LANCE L=430 M22 028 WITHOUT C | 1 |
| 27 | 0011001000 | ADATTATORE M22x1,5+ATTACCO INNESTO RAPIDO C/FILE | M22 ALLOY MALE - QUICK CONNECTION FEMALE | 1 |
| 28 | 1413005600 | IDROSPAZZOLA FISSA CON ATTACCO COGETIL GRANDE | FIX BRUSH WITH ADAPT.REINFORCED COGETIL | 1 |
| 29 | 1407008600 | INNESTO RAPIDO 3/4 TRASP. C/GUARNIZ. C/FILTRO ISPEZI | TRANSP.QUICK COUPLING W/INSPECT.FILTER | 1 |

D50010940C/01



IDROPULTRICE KLS 1680 GOLD PLUS 230-240/50 (9068011900)
HIGH PRESSUE WASHER KLS 1680 GOLD PLUS 230-240/50 (9068011900)

MOTOPOMPA/MOTORPUMP

D50010940C/01

| Pos. | componente | Descrizione | Description | Qta |
|------|------------|---|--|-----|
| 2 | 0436003700 | CUSCINETTO REGGISPINTA A SFERE 35X55X12 PER PT'03 | THRUST BEARING 35X55X12 PT'03 | 1 |
| 3 | 5027009600 | GRUPPO C.GUIDA C/TS 13KG-ASP.+TEST.OTT.TAPPI FIL. (PT | BODY GUIDE+BRASS HEAD W/TS-INJ.-THREAD CAPS- | 1 |

DATA VALIDITA'
DATE OF VALIDITY

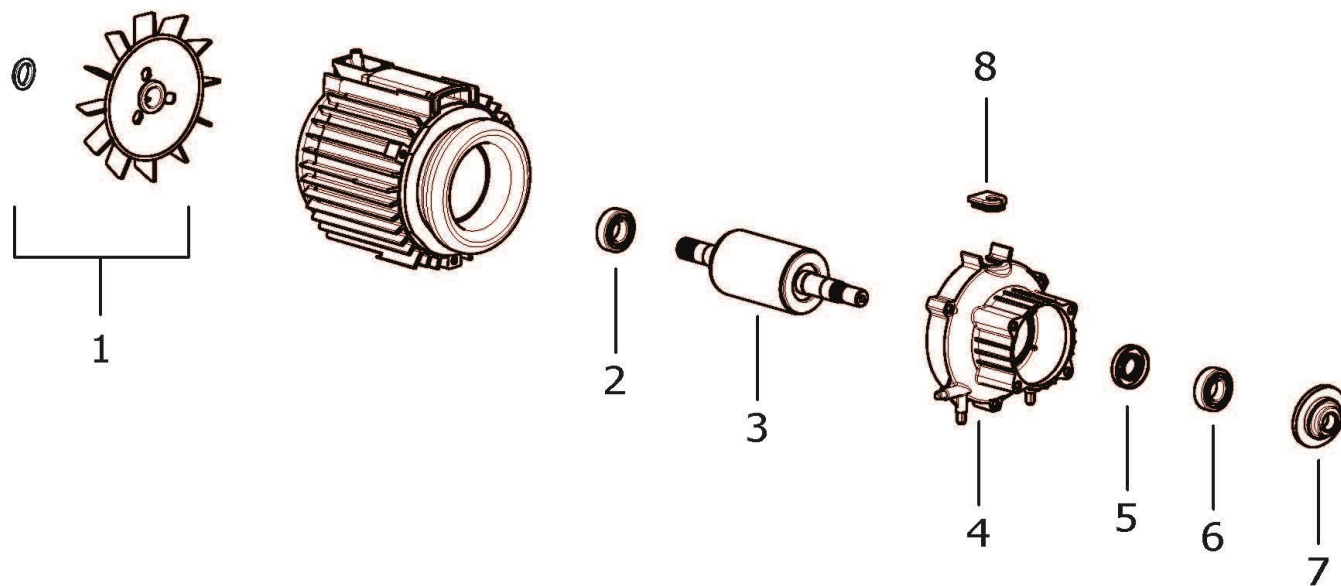
29/06/2022

DATA EMISSIONE
PRINTING DATE

29/06/2022

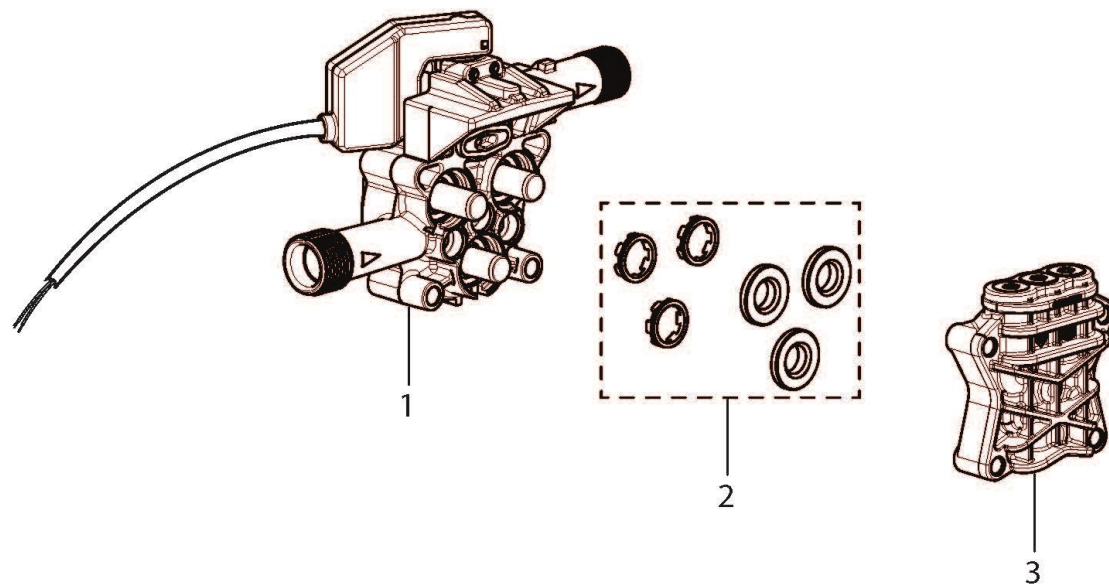


D50091122C/02



| Pos. | componente | Descrizione | Description | Qta |
|------|------------|--|---|-----|
| 1 | 3632018000 | KIT VENTOLA + ANELLO PER MOTORE D.110 | KIT FAN + RING FOR MOTOR D.110 | 1 |
| 2 | 0438016600 | CUSCINETTO RADIALE A SFERE 6202 2RS (15x35x11) | BALL BEARING 6202 2RS (15x35x11) | 1 |
| 3 | 0001102500 | ALBERO ROTORE PER MOTORE 110H100ALL | ROTOR FOR 110H100AL | 1 |
| 4 | 1009045900 | FLANGIA ANT.MOTORE D.110-'10 PT'03 X VITI AUTOFIL. | MOTOR FLANGE D.110-'10 PT'03 WITHOUT THREAD | 1 |
| 5 | 0019022900 | ANELLO TENUTA OLIO D.20X35X7 | OIL SEALING RING D. 20X35X7 | 1 |
| 6 | 0438015500 | CUSCINETTO RADIALE A SFERE 6303 (17X47X14) | RADIAL | 1 |
| 7 | 0001102700 | PIATTELLO 9GR45 PER PT'03 CUSCIN.REGGISPINTA SFERE | WOBBLE PLATE 9GR45 FOR PT'03 | 1 |
| 8 | 2434009000 | PASSACAVO PT'03-10 | CABLE HOLDER PT'03-10 | 1 |

D50091121C/01

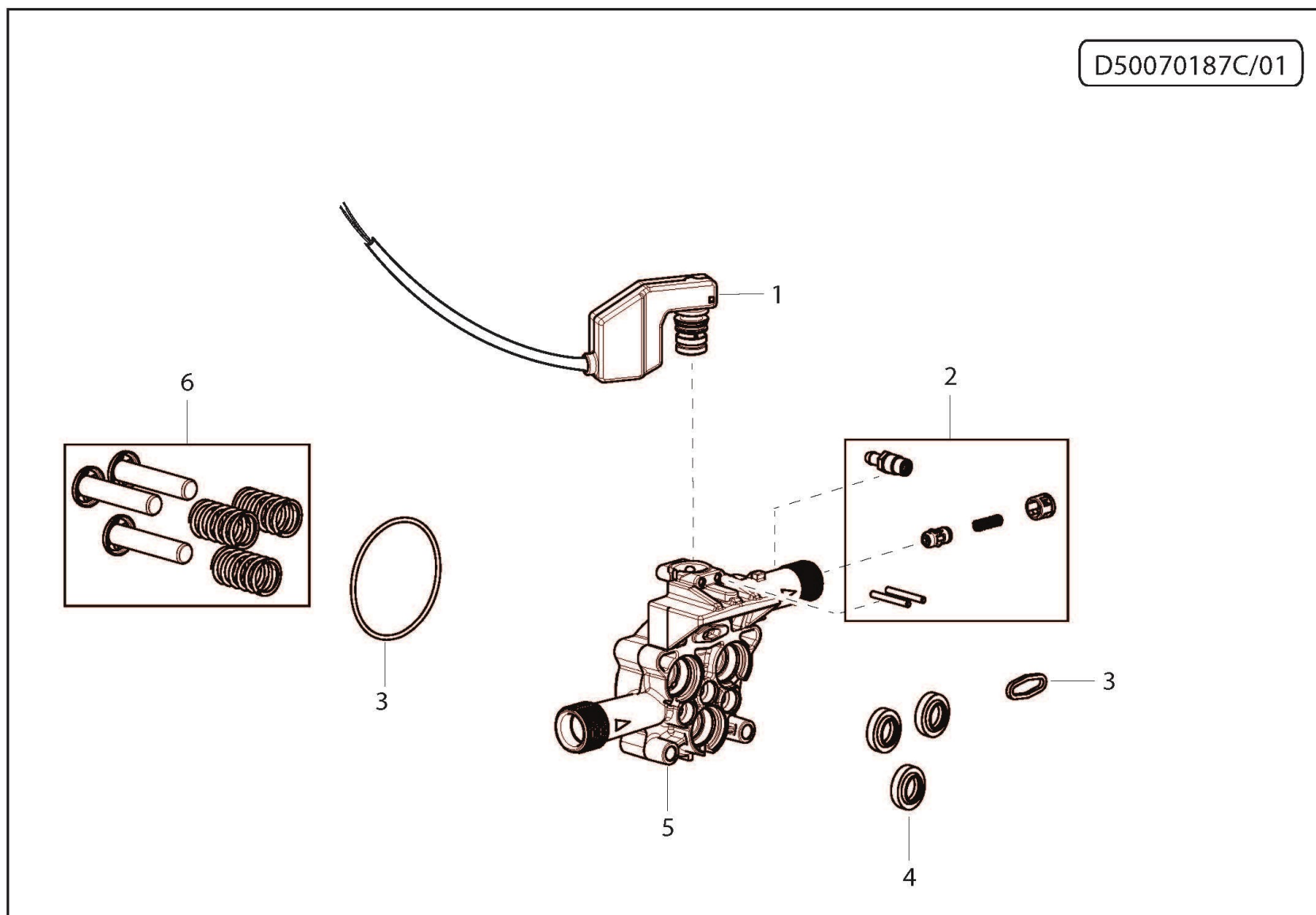


IDROPULITRICE KLS 1680 GOLD PLUS 230-240/50 (9068011900)
HIGH PRESSUE WASHER KLS 1680 GOLD PLUS 230-240/50 (9068011900)

GRUPPO CORPO GUIDA / GUIDE BODY GROUP

D50091121C/01

| Pos. | componente | Descrizione | Description | Qta |
|------|------------|--|---|-----|
| 1 | 5027009900 | CORPO GUIDA PT'03 PIST.D.12 C/ TS-ASP.-VALV.COMP.-M. | PISTON BODY GUIDE PT'03 W/Ts-SUCTION 13KG (40 | 1 |
| 2 | 5027006700 | KIT 257 LW ANELLI APP.TENUTA ALLUM.+ DISTANZIALI PT | KIT 257 O-RING SEAL | 1 |
| 3 | 5027009800 | TESTATA PT'03 D.12 OTT.C/TAPPI FIL. | COMPLETE BRASS HEAD PT'03 WITH THREAD CAPS | 1 |



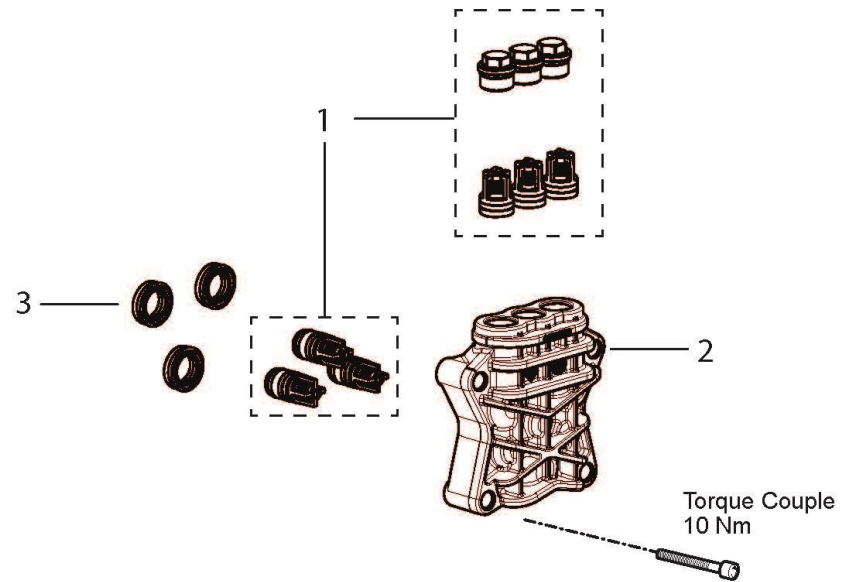
IDROPULTRICE KLS 1680 GOLD PLUS 230-240/50 (9068011900)
HIGH PRESSUE WASHER KLS 1680 GOLD PLUS 230-240/50 (9068011900)

CORPO GUIDA PT'03 PIST.D.12 C/ TS-ASP.-VALV.COMP.-M.13KG

D50070187C/01

| Pos. | componente | Descrizione | Description | Qta |
|------|------------|--|--|-----|
| 1 | 3103004900 | ASSIEME V.COMP. C/TS PT'03 CAVO L=530 MOLLA 13KG (C | COMPLETED VALVE TS PT'03 CABLE L=530 SPRING 13 | 1 |
| 2 | 5027005800 | KIT 252 LW INIETTORE 1,7 +PORTAG.FIL.+VALV.RITEGNO P | KIT 252 | 1 |
| 3 | 5027005400 | KIT "O-RING PER PT'03" | KIT "O-RING FOR PT'03" | 1 |
| 4 | 5027005900 | KIT 79 LW ANELLI TENUTA OLIO X PARTNER D.12/FIBRA | KIT 79 LW OIL SEALS | 1 |
| 5 | 2432004700 | CORPO GUIDA PISTONI PT'03 C/FORO ASP.DET.FILET. | PISTON BODY GUIDE PT'03 WITH SUCTION VALVE | 1 |
| 6 | 2409013600 | KIT 167 LW 3 PISTONI +MOLLE PT'03 | KIT 167 LW PISTON | 1 |

D50080234C/01



IDROPULTRICE KLS 1680 GOLD PLUS 230-240/50 (9068011900)
HIGH PRESSUE WASHER KLS 1680 GOLD PLUS 230-240/50 (9068011900)

TESTATA / BRASS PUMP

D50080234C/01

| Pos. | componente | Descrizione | Description | Qta |
|------|------------|--|--|-----|
| 1 | 3604007300 | KIT 287 LW VALV.ASP./MAND.+TAPPI OTT. FIL. PT' 03 | KIT 287 SUCTION/DELIVERY VALVE+ BRASS THREAD C | 1 |
| 2 | 3218058200 | TESTATA PT'03 OTT. LAVOR C/FIL. X TAPPI VALV. S/MANO | BRASS HEAD | 1 |
| 3 | 5019029800 | KIT 124 ANELLI TENUTA ACQUA PARTNER D.12 | KIT 124 O-RING WATER SEAL PARTNER D.12 | 1 |