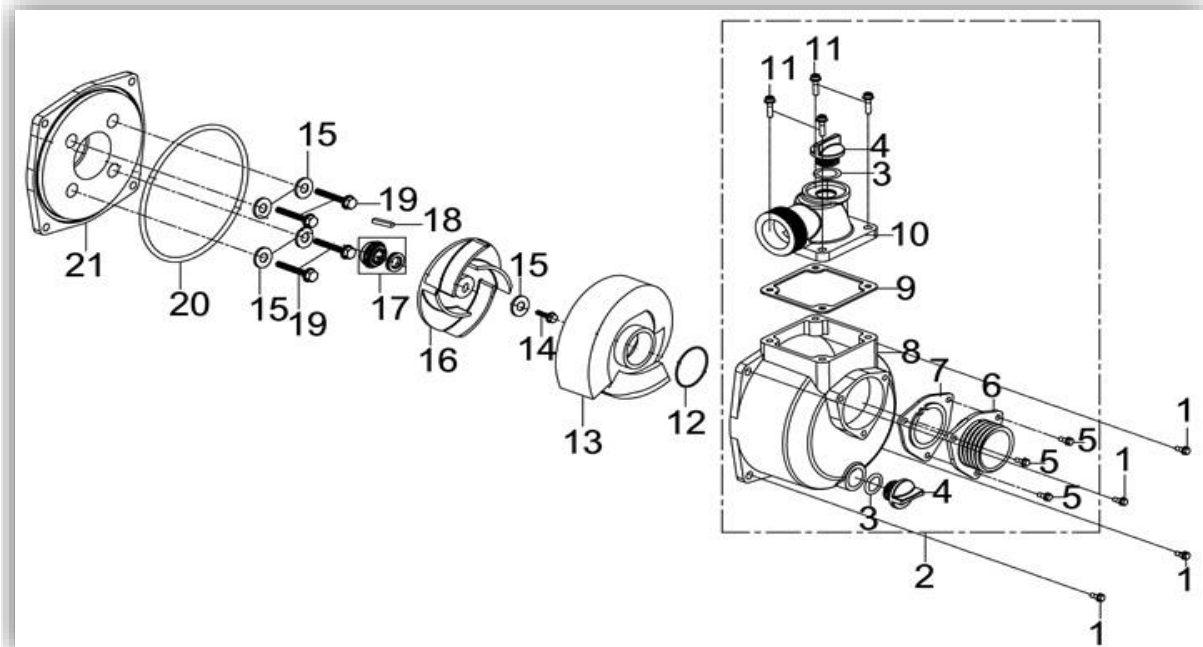


Article 71065: MOTORPUMP HONDA WP 35 HX



| POSITION | PART NUMBER | DESCRIPTION | Q'ty |
|----------|-------------------|-----------------------------------------|------|
| 1 | B057890010002870B | BOLTM 10x28 | 4 |
| 4 | TS1101-C16-0000 | WATER PUMP THREAD PLUG WITH ORING | 2 |
| 5 | B057890010002570B | BOLTM 10x25 | 3 |
| 6 | 404342105101 | INLET CONNECTOR | 1 |
| 7 | 404342150001 | SEALING RUBBER | 1 |
| 8 | 404342075101 | PUMP | 1 |
| 9 | 404342140001 | EXHAUST SEALING RUBBER WASHER | 1 |
| 10 | TS1402-C21-0100 | WATER PUMP EXHAUST CONNECTOR | 1 |
| 11 | B057890010002870B | BOLTM 10x28 | 4 |
| 12 | 404342060001 | VANE SHROUD O-SEALING | 1 |
| 13 | 404342050001 | VOLUTE | 1 |
| 14 | B057830008003570B | BOLTM 8x35 | 1 |
| 15 | 91302-90802015000 | WASHER $\Phi 8 \times 2 \times \Phi 15$ | 5 |
| 16 | 403342040002 | PUMP VANE | 1 |
| 17 | 403342030002 | SEALING | 1 |
| 18 | 91606-0140500500B | KEY | 1 |
| 19 | B000700108006070H | BOLTM 8x60 | 4 |
| 20 | 404342020001 | PUMP SEAL RING | 1 |
| 21 | 404342015101 | WATER SIDE COVER | 1 |

