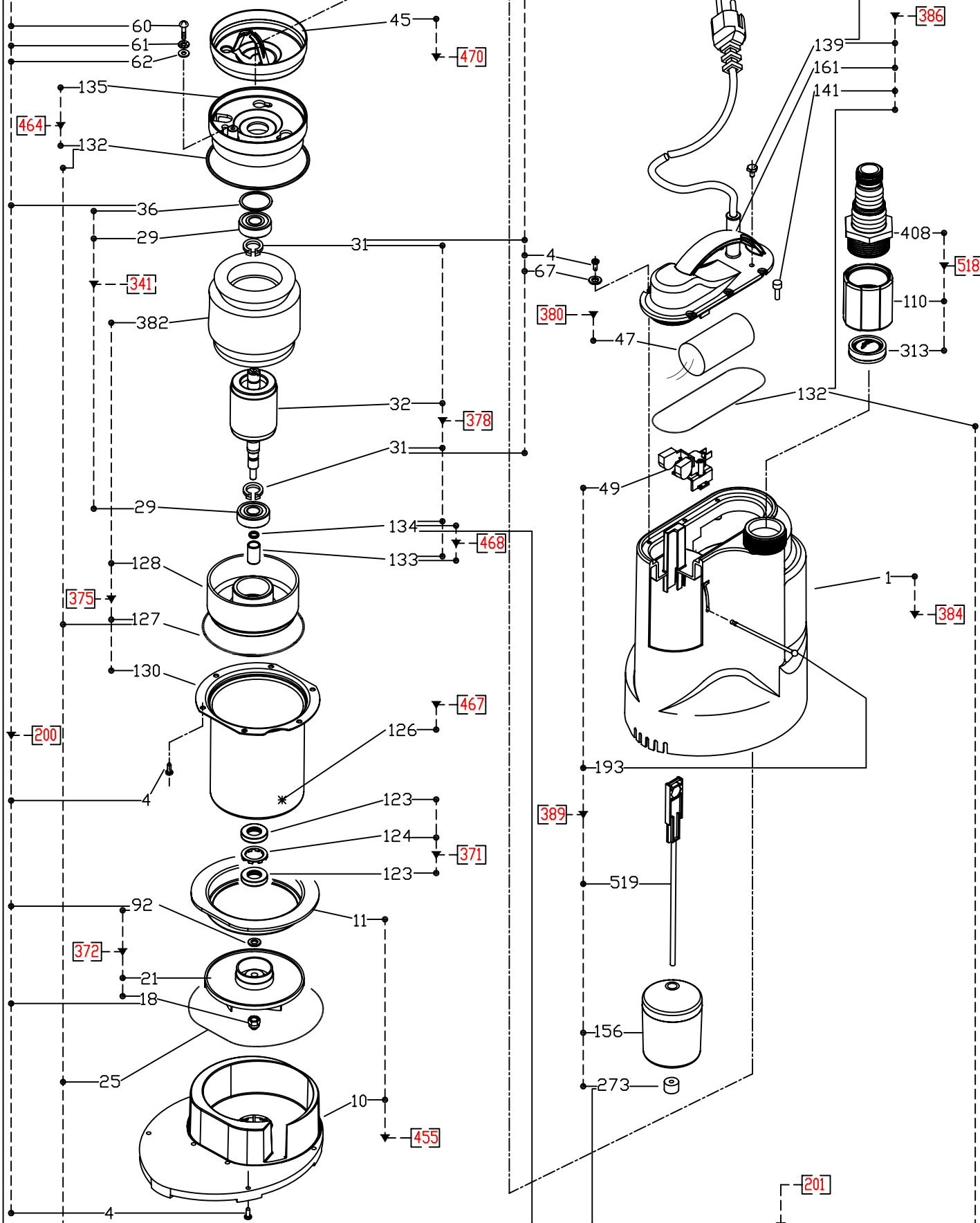


B


A

B

A



| | | | | | |
|----------|------------|-----------------|--------|-------|--------|
| Drawn | M.Di Nasso | Title | COMPAC | Sheet | 1 of 1 |
| Approved | M.Bernacca | Date (dd/mm/yy) | Dwg # | | |

| <div></div> | | | | DRW. DR100019 | | SPARE-PARTS | |
|--|-----------------|---------------------------------------|---------------------------|------------------------------------|--|-----------------------|------------|
| | | | | Select language <div>English</div> | | SPARE-PARTS KIT TABLE | |
| SPARE-PARTS | | | | COMPAC | | PUMP MODEL | |
| RECOMMEN DED PARTS KIT | KIT REF. Nr. | KIT DESCRIPTION | COMPONE NT REF. Nr. | COMPONENT DESCRIPTION | | COMPAC 150 | COMPAC 200 |
| | 200 | BOLTS AND SCREWS KIT | 60 | SCREW (GROUND ~) | | 6999239 | 1 pc |
| | | | 61 | WASHER (GROUND SCREW TOOTHED ~) | | | 1 pc |
| | | | 62 | WASHER (GROUND SCREW PLAIN ~) | | | 1 pc |
| | | | 36 | RING (ELASTIC ~) | | | 1 pc |
| | | | 31 | SNAP RING (PUMP SIDE ~) | | | 2 pc |
| | | | 92 | WASHER | | | 1 pc |
| | | | 18 | NUT (SELF-LOCKING ~) | | | 1 pc |
| | | | 139 | SCREW (INSPECTION ~) | | | 1 pc |
| | | | 4 | SCREW | | | 18 pc |
| | | | 67 | WASHER | | | 6 pc |
| * | 201 | Gasket Kit | 25 | O-RING (PUMP BODY ~) | | 6999234 | 1 pc |
| | | | 134 | O-RING (CERAMIC BUSHING ~) | | | 1 pc |
| | | | 193 | CLIP (FLOAT SWITCH ~) | | | 1 pc |
| | | | 127 | O-RING (LOWER BEARING FLANGE ~) | | | 1 pc |
| | | | 132 | O-RING (MOTOR BODY ~) | | | 2 pc |
| | 341 | BEARING KIT | 29 | BEARING (COUPLE OF ~) | | 6999240 | 1 pc |
| | | | 36 | RING (ELASTIC ~) | | 1 pc | |
| * | 371 | MECHANICAL SEAL KIT | 123 | RING (SEAL ~) | | 6999241 | 2 pc |
| | | | 124 | SPACER (SEAL RING ~) | | | 1 pc |
| | 372 | HYDRAULIC KIT | 18 | NUT (SELF-LOCKING ~) | | 6997097 | 1 pc |
| | | | 92 | WASHER | | | 1 pc |
| | | | 21 | IMPELLER | | | 1 pc |
| | 375 | STATOR KIT | 382 | WINDING STATOR | | 6999242 | 1 pc |
| | | | 128 | FLANGE (LOWER BEARING HOLDER ~) | | | 1 pc |
| | | | 127 | O-RING (LOWER BEARING FLANGE ~) | | | 1 pc |
| | | | 130 | MOTOR BODY | | | 1 pc |
| | 378 | SHAFT + ROTOR KIT | 31 | SNAP RING (PUMP SIDE ~) | | 6999244 | 2 pc |
| | | | 32 | SHAFT (ROTOR WITH ~) | | | 1 pc |
| | | | 133 | BUSHING (CERAMIC ~) | | | 1 pc |
| | | | 134 | O-RING (CERAMIC BUSHING ~) | | | 1 pc |
| | 380 | CAPACITOR KIT | 47 | CAPACITOR | | 6999246 | 1 pc |
| | 384 | PUMP BODY KIT | 1 | PUMP BODY | | 6999238 | |
| | 386 | MOTOR COVER KIT | 139 | SCREW (INSPECTION ~) | | 6999233 | 1 pc |
| | | | 132 | O-RING (MOTOR BODY ~) | | | 1 pc |
| | | | 141 | CONNECTOR 2.5 SQMM | | | 2 pc |
| | | | 161 | COVER (PUMP ~ W/POWER CABLE) | | | 1 pc |
| | 389 | FLOAT SWITCH | 49 | SWITCH | | 6999235 | 1 pc |
| | | | 156 | FLOAT SWITCH | | | 1 pc |
| | | | 273 | RING (STOP ~) | | | 1 pc |
| | | | 193 | CLIP (FLOAT SWITCH ~) | | | 1 pc |
| | | | 519 | FLOAT SWITCH ROD | | | 1 pc |
| | 455 | BASE KIT | 10 | DIFFUSER (SUCTION ~) | | 6997900 | 1 pc |
| | | | 11 | DIFFUSER (DISCHARGE ~) | | | 1 pc |
| | 464 | FLANGE (UPPER BEARING HOLDER ~) KIT | 132 | O-RING (MOTOR BODY ~) | | 6999248 | 1 pc |
| | | | 135 | FLANGE (UPPER BEARING HOLDER ~) | | | 1 pc |
| | 467 | OIL KIT | 126 | LUBRICANT | | 658082685 | |
| * | 468 | BEARING (BRONZE ~) KIT | 133 | BUSHING (CERAMIC ~) | | 6999249 | 1 pc |
| | | | 134 | O-RING (CERAMIC BUSHING ~) | | | 1 pc |
| | 470 | CAPACITOR BOX COMPLETE KIT | 45 | HOLDER (CAPACITOR ~ W/O HOLES) | | 6999250 | |
| | 518 | PIPE FITING KIT | 110 | SLEEVE | | 6010786 | 1 pc |
| | | | 313 | VALVE (CLAPET ~) | | | 1 pc |
| | | | 408 | PIPE FITTING | | | 1 pc |