

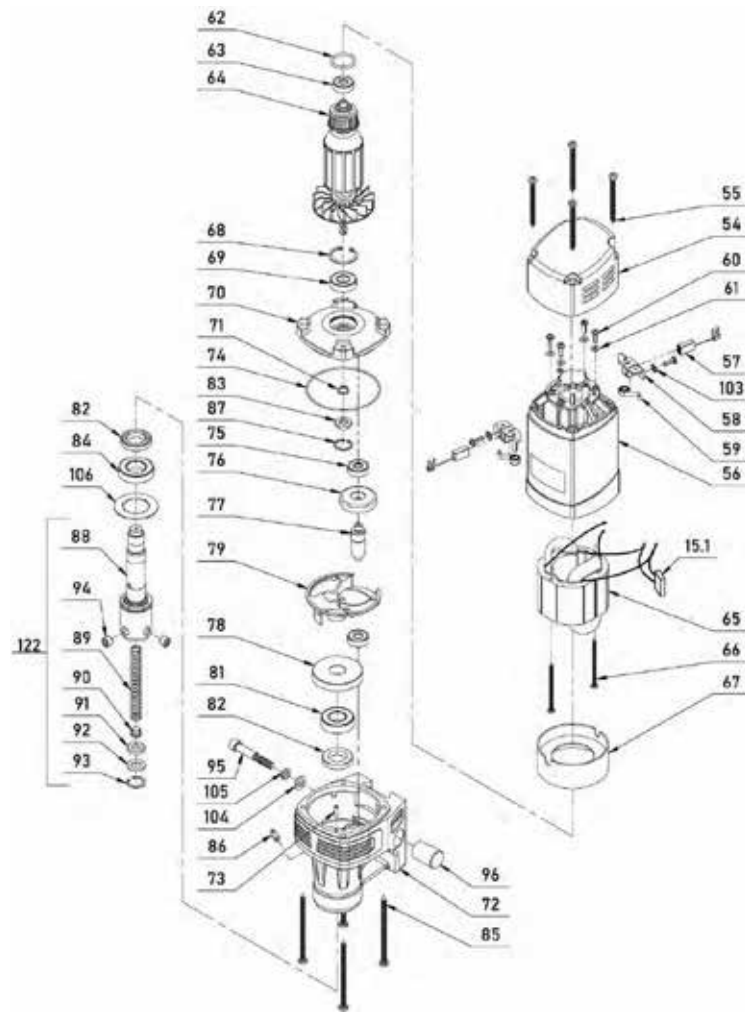
N°	Qty	Part n°	Description	Model
1	1	1622303019	Fuselage	
2	1	1622303027	Handle	31x37x112
3	1	1622303028	Handle cap	19x25x11
4	1	1622303042	Hexagon socket headcap screws	M6x90
5	1	1622102062	Hexagon lock nut	M6
6	7	1622103010	Spring washer	6
7	6	1622103011	Gasket	6
8	1	1622303035	Button panel	110x75x7
9	4	1622102056	Hexagon flat & roundhead cap screws	M4x10
10	1	1622601044	Magnetic waterproofswitch	KJD17 220V
11	1	1622608020	Rocker switch	KCD4
12	1	1622303056	Circuit board box	66x52x30.5
13	1	1622303057	Cap of circuit board box	66x52x24
14	2	1622102055	Cross screw	M3x15
15	1	1622204012	Circuit board	DXx35 220V II
16	2	1622102188	Cross screw	M4x8
17	1	1622303037	Sealed plate	76x50x5
18	2	1622102063	Hexagon socketcountersunk head screws	M6x10
19	1	1622202019	Durable twistingconnector	MA16xPx10
20	1	1622202052	Corner connector	43x30x22 AD13
21	2	1622103016	External teeth serratedlock washers	4
22	2	1622103006	Spring washer	4
24	1	1622303259	Magnetic base	167x84x44 220V
25	4	1622102066	Hexagon round head screws	M6x25
26	2	1622102265	Hexagon round head screws	M6x20
27	1	1622303036	Sealed sleeve for feed shaft	620x623x73
28	1	1622303040	Feed gear shaft	131,5x107 Z15m1
29	3	1622303029	Feed handle	110x130x120
30	3	1622303030	Feed handle cap	120x9
31	3	1622102054	Hexagon head bolt	M10x110
32	1	1622303014	Flat washer	120x130x1
33	1	1622601028	Split washer	115x129.5x1.5
34	1	1622303031	Liquid container	600ml
35	1	1622303032	Cap of liquid container	633x15.5
37	1	1622399031	Valve aluminium joint	615.5x37x90
38	1	1622611208	Hexagon thin nuts	M8x1
39	1	1622199013	Steel band elastic hoop	@6
40	0.3	1622499001	Pu tube	@6*64
41	1	1622611207	Water nozzle	14
42	1	1622303202	Ship type switch protective cover	37x30.5x12
43	2	1622303010	Guide rail	208x22x15.5
44	6	1622102191	Hexagon round head screws	M5x10
45	3	1622102061	Hexagon flat end tight screws	M5x8
46	1	1622303427	Gear rack	152x12x12 m1
47	3	1622102060	Hexagon round head screws	M5x15
48	3	1622103008	Standard spring washer	5
50	1	1622303011	Sliding plate	190x49x21
51	2	1622102057	Hexagon flat end tight screws	M4x10
52	0.4	1622603018	Nylon wave tube	@13
53	2	1622102248	Cross tapping screw	ST3.5x13
107	0.65	1622202065	Two-core power cable	220V 10A 1mm²
108	1	1622303443	Wire cover	27x23x12.3
109	2	1622102134	Cross self-tapping screw	sT2.9x10
110	1	1622102215	Cable clamp	026x1
111	2	1622102227	Hexagon sockethead cap screws	M4x25
112	1	1622202061	Tension disc	026x2F
113	3	1622102228	Hexagon sockethead cap screws	M4x12
114	3	1622105003	Round steel ball	Y6
115	1	1622106073	Cylindricalcompression spring	B3.8x60.6x10
116	1	1622105004	Round steel ball	64
117	1	1622303408	Locking clutch shaft	610.4x35
118	1	1622101078	Circlip for hole	Y12
119	1	1622303407	Locking device	Y30x13.5
120	1	1622101061	Elastic cylindrical pin	63.5x14
121	1	1622303041	Water bottle assembly	

Voor meer info:

Contimac bv
Z15 Mollem 440,
1730 Asse, BE

Contimac GMT International
Keerweer 34,
3316 KA Dordrecht, NL

info@contimacgmt.be
www.contimacgmt.be



N°	Qty	Part n°	Description	Model
15.1	1	1622611098	Electrofusor	275V 0,1uf
54	1	1622303441	Motor cover	88x83x68
55	4	1622102070	Cross self-tapping screw	ST4.8x50
56	1	1622303025	Motor shell	
57	2	1622299003	Carbon brush	18x6.2x9.9 220V
58	2	1622299004	Carbon brush base	18x6.2x9.9
59	2	1622299005	Flat spiral spring	5x0.3
60	6	1622102058	Cross head self - tappinglocking screw	M4x12
61	4	1622103007	Corrugated spring washer	4
62	1	1622104034	O-ring	622x62.5
63	1	1622611014	Deep groove ball bearings	608 ZZ
64	1	1622299001	Armature	1100W 220V
65	1	1622299002	Field coil	1100W 220V
66	2	1622102069	Cross self-tapping screw	ST3.9x62
67	1	1622303026	Wind gathering sleeve	675.5x64.5x30
68	1	1622601282	Hole circlip	628
69	1	1622105034	Deep groove ball bearings	6001 DDU
70	1	1622303021	Gear box cover	
71	1	1622103014	Shaft circlip	610
72	1	1622303403	Gearbox	115.5x101.5x89
73	1	1622102034	Cylindrical pin	64x12
74	1	1622104078	O o-type rubber seal ring	678x61.5
75	2	1622105006	Deep groove ballbearings	608
76	1	1622303001	Helical gear	z34m1 639,3*8

N°	Qty	Part n°	Description	Model
77	1	1622303002	Gear shaft	z8m1,25 115*44,5
78	1	1622303003	Straight gear	z40m1,25 652,3*10
79	1	1622303023	Oil guide	178x22.6
81	1	1622105007	Deep groove ball bearing	6003x2RS
82	2	1622104042	Skeleton seal ring	120x632x6
83	1	1622104079	Skeleton seal ring	19x618x4
84	1	1622105008	Deep groove ball bearing	61904x2RS
85	4	1622102071	Cross self-tapping screw	ST4.8x85
86	1	1622301491	Brass nozzle	1M6x16x2.2
87	1	1622101080	Hole circlip	118
88	1	1622303404	Drill spindle	134x619.05x136
89	1	1622106056	Ejection spring	111.5x61.2x21
90	1	1622303009	Bulkhead	111.5x8
91	1	1622101044	Rubber washer	119x610x3.7
92	1	1622301020	Spacer	619x11x1.7
93	1	1622101001	Hole circlip	619x1
94	2	1622102226	Hexagon socket setscrew	M10.8
95	1	1622102067	Hexagon socket headcap screws	M8.50
96	1	1622303012	Clamping block	620x24
103	2	1622103016	External teeth serratedlock washers	4
104	1	1622103012	Gasket	8
105	1	1622103013	Spring washer	8
106	1	1622103025	Protective spacer	646.5x0.8
122	1	1622303424	Drill spindle assembly	634x619.05x136

Note: Parts are subject to change without notice due to technical improvements.

Voor meer info:

Contimac bv
Z15 Mollem 440,
1730 Asse, BE

Contimac GMT International
Keerweer 34,
3316 KA Dordrecht, NL

info@contimacgmt.be
www.contimacgmt.be