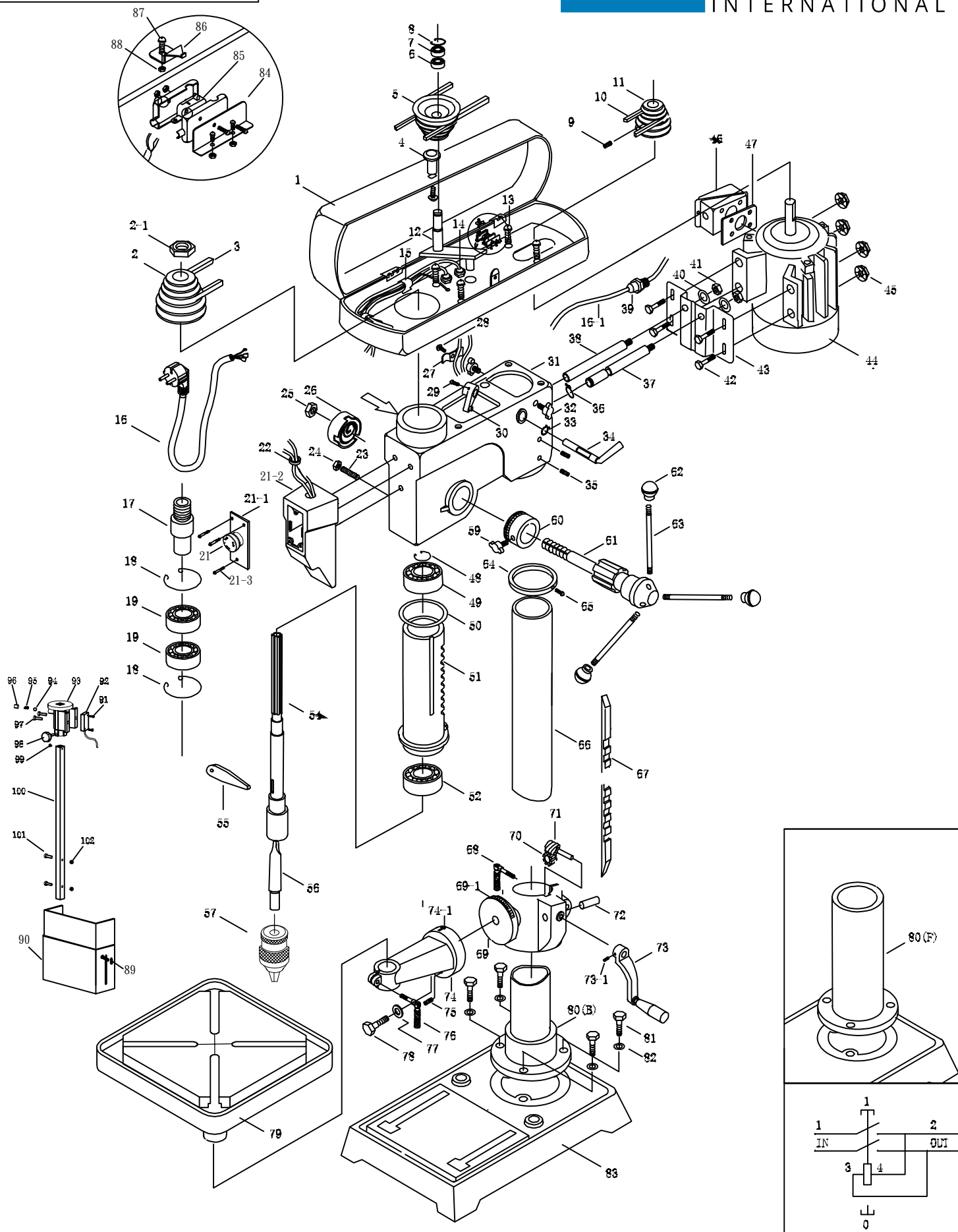


CH-18(F)CONTIMAC

Artikel: 35020

CONTIMAC **GAT**
INTERNATIONAL



| Part | Reference | Description |
|------|-----------|-----------------------|
| 1 | 35662 | pulley cover |
| 2 | 35254 | spindle pulley |
| 2-1 | | nut 1/2" |
| 3 | 35236 | v-belt |
| 4 | | knob M6 |
| 5 | 35374 | middle pulley |
| 6 | 35665 | ball bearing |
| 7 | 35666 | ball bearing |
| 8 | 35207 | snap ring s-15 |
| 9 | | set screw M6*10 |
| 10 | 35235 | v-belt |
| 11 | 35310 | motor pulley |
| 12 | 35668 | shaft assembly |
| 13 | | set screw M6*10 |
| 14 | 35670 | electrial cord |
| 15 | 35671 | key holder |
| 16 | 35672 | power cord |
| 17 | 35673 | driver insert |
| 18 | 35245 | circlip ϕ 55 |
| 19 | 35246 | bearing |
| 20 | 35303 | switch (ek9) |
| 20-1 | | screw M3*16 |
| 21 | 35313 | er. switch |
| 21-1 | 35675 | switch plate |
| 21-2 | 35676 | switch box |
| 22 | 35677 | key holder |
| 23 | | quill set screw M6*10 |
| 24 | | hex nut M8 |
| 25 | | nut M12 |
| 26 | 35119 | spring & cap |
| 27 | 35680 | cord clamp |
| 28 | | screw M4*10 |
| 29 | | screw M8*16 |
| 30 | 35683 | adjustment lever |
| 31 | 35684 | head |
| 32 | | set screw M10*32 |
| 33 | 35686 | snap ring ϕ 15 |
| 34 | 35800 | lever shaft ass'y |
| 35 | | set screw M5*8 |
| 36 | 35688 | snap ring ϕ 15 |
| 37 | 35689 | lever shaft ass'y |

| Part | Reference | Description |
|--------|-----------|----------------------|
| 38 | 35690 | lever shaft ass'y |
| 39 | 35691 | electrial cord |
| 40 | | washer ϕ 4 |
| 41 | | nut M8 |
| 42 | | bolt M8*35 |
| 43 | 35695 | motor plate |
| 44 | 35180 | motor |
| 45 | | nut M8 |
| 46 | 35697 | junction box |
| 47 | 35698 | rubber |
| 48 | 35699 | snap ring ϕ 55 |
| 49 | 35700 | ball bearing |
| 50 | 35701 | rubber ϕ 52 |
| 51 | 35702 | quill |
| 52 | 35703 | ball bearing |
| 54 | 35341 | spindle |
| 55 | 35380 | drift key |
| 56 | 35704 | arbor |
| 57 | 35705 | chuck(keyless) |
| 59 | | set screw M8*18 |
| 60 | 35707 | sleeve |
| 61 | 35028 | shaft |
| 62 | 35708 | handle knob |
| 63 | 35709 | feed handle |
| 64 | 35200 | rack collar |
| 65 | | set screw M6*12 |
| 66 | 35711 | column (bench) |
| 66 | 35712 | column (floor) |
| 67 | 35713 | rack (bench) |
| 67 | 35104 | rack (floor) |
| 68 | | clamp bolt M12*40 |
| 69 | 35714 | bracket |
| 69-1 | 35715 | tilt scale |
| 70 | 35016-070 | gear |
| 71 | 35016-071 | worm |
| 72 | 35716 | gear shaft |
| 73(-1) | 35717 | crank handle + screw |
| 74 | 35719 | arm |
| 74-1 | 35720 | tilt scale |
| 75 | | screw M6*10 |
| 76 | | clamp bolt M10*35 |

| Part | Reference | Description |
|--------|-----------|-------------------------|
| 77 | | washer Ø16 |
| 78 | | bolt M16*40 |
| 79 | 35342 | table |
| 80 | 35725 | flange (bench) |
| 80 | 35726 | flange (floor) |
| 81 | | bolt M10*35 |
| 82 | | washer Ø10 |
| 83 | 35343 | base (bench) |
| 83 | 35729 | base (floor) |
| 84 | 35730 | limit screw plate fixed |
| 85 | 35731 | limit switch |
| 86 | 35732 | limit screw plate |
| 87 | | screw M6*10 |
| 88 | | nut M6 |
| 89 | | screw M8*18 |
| 90 | 35255 | chuck guard |
| 91-102 | 35157 | dril head guard |

Voor prijsaanvragen, gelieve te mailen naar **dnv@contimacgmt.be**

Pour toute demande de prix, veuillez envoyer un courriel à **sav@contimacgmt.be**