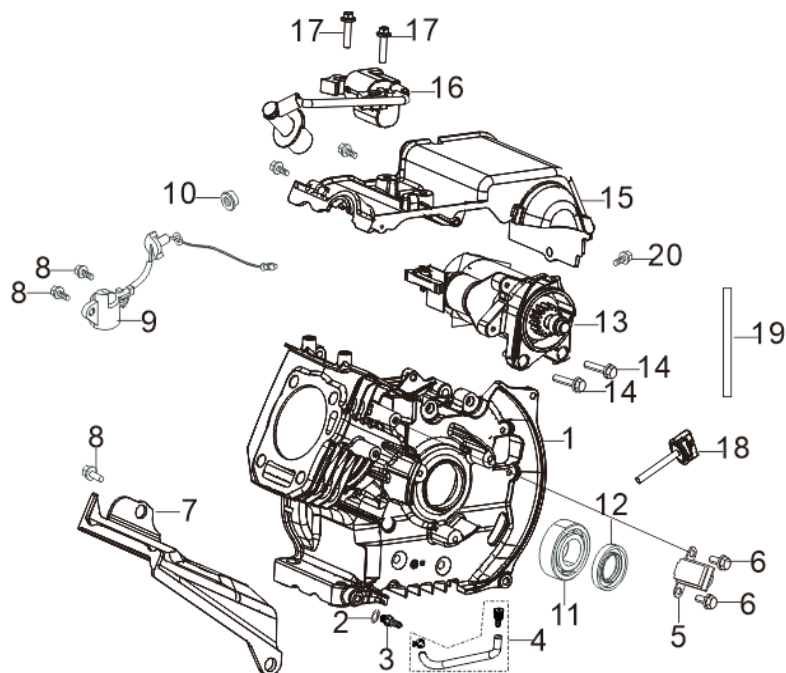


70375: GRN4500IS

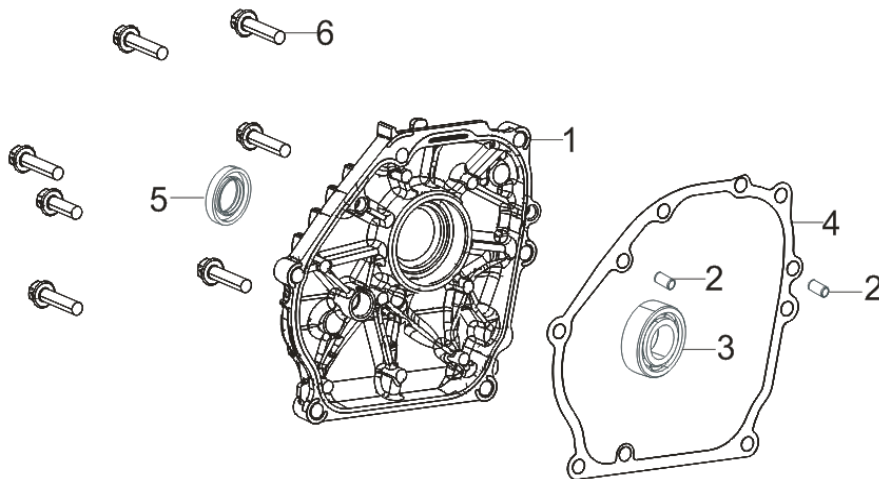
FIG.1 CRANKCASE./COVER SUBASSEMBLY,CRANKCASE (E01)



REF.NO.	PART NO	DESCRIPTION	Q'TY
E01-1	11310-Z4W0211-00A0	Crankcase Subassembly.	1
E01-2	90408-Z010510-00A0	Flat Washer	1
E01-3	90689-Z430211-00A0	Joint, Fuel Tube	1
E01-4	11011HZ1D0210-Q5A0	Tube, Oil Drain	1
E01-5	30130-Z1D0110-0000	Trigger Assy.	1
E01-6	90001-0516-01A0	Bolt	2
E01-7	19309-Z1D0110-00A0	Body Right Shield	1
E01-8	90001-0616-01A0	Bolt	3
E01-9	37060-Z010120-0000	Sensor, Engine Oil	1
E01-10	90305-Z010210-01A0	Hexagon Nut With Flange	1
E01-11	90547-0305-CLAT	Deep Groove Ball Bearing	1
E01-12	90682-Z010110-00A0	Seal, Oil	1
E01-13	30300-Z1D0110-00A0	Starting Motor Assembly	1
E01-14	90001-0628-01A0	Bolt	2
E01-15	16675-Z4W0110-00A0	Shield Cover	1
E01-16	30400-Z4W0110-0001	Coil, Ignition	1
E01-17	90001-0628-01A0	Bolt	2
E01-18	15010-Z010130-Q5A0	Dipstick Subassembly, Oil	1
E01-19	51198-Z4W0110-00A0	Seal Strip	1

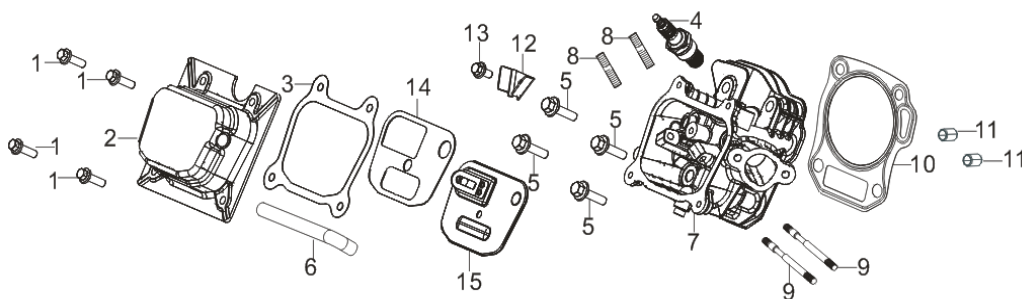
E01-20	90001-0612-01A0	Bolt	3
--------	-----------------	------	---

FIG.2 COVER SUBASSEMBLY, CRANKCASE (E02)



REF.NO.	PART NO	DESCRIPTION	Q'TY
E02-1	11411-Z1D0110-00A0	Cover, Crankcase	1
E02-2	90502-0812-00A0	Position Pin	2
E02-3	90547-0205-CLAT	Deep Groove Ball Bearing	1
E02-4	11001-Z010120-00A0	Gasket, Crankcase	1
E02-5	90682-Z010110-00A0	Seal, Oil	1
E02-6	90001-0832-01A0	Bolt	6

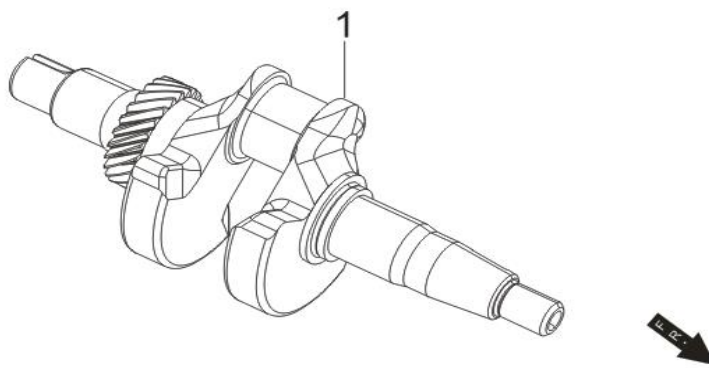
FIG.3 HEAD SUBASSEMBLY, CYLINDER / PLUG, SPARK (E03)



REF.NO.	PART NO	DESCRIPTION	Q'TY
E03-1	90001-0612-01A0	Bolt	4
E03-2	12410-Z1D0111-00A0	Cover Subassembly, Cylinder Head	1
E03-3	12004-Z1D0110-00A0	Cylinder Head Cover Gasket	1
E03-4	30010-Z010110-00A0	Plug, Spark	1
E03-5	12003-Z010110-00A0	Cylinder Head Bolt	4

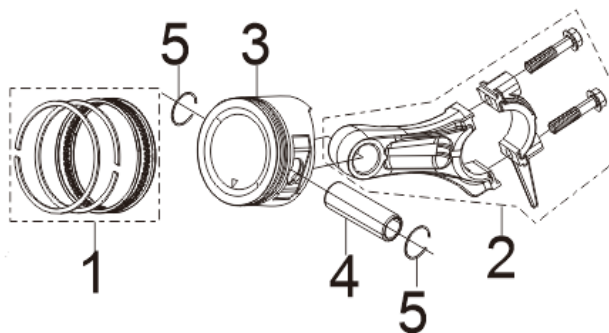
E03-6	17004-Z1D0110-00A0	Tube, Breather	1
E03-7	12140-Z4A0210-0BA0	Head Subassembly, Cylinder	1
E03-8	90203-Z010110-0000	Stud Bolt	2
E03-9	90207-Z330210-0000	Stud Bolt	2
E03-10	12131-Z4A0110-00A0	Gasket, Cylinder Head	1
E03-11	90502-1114-00A0	Position Pin	2
E03-12	12419-Z950311-00A0	Cylinder Head Cover Pin Limit Plate	1
E03-13	90001-0612-01A0	Bolt	1
E03-14	11332-Z1D0110-00A0	Gasket, Breath Groove	1
E03-15	11320-Z1D0110-00A0	Stop Engine Piece Subassembly	1

FIG.4 RING SET,OIL / ROD,CRANKSHAFT CONNETING (E04)



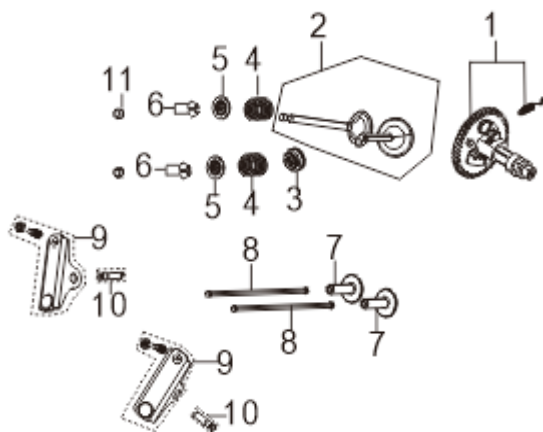
REF.NO.	PART NO	DESCRIPTION	Q'TY
E04-1	13300-Z4W0210-00A0	Crankshaft Assy.	1

FIG.5 RING SET,OIL / ROD,CRANKSHAFT CONNETING (E05)



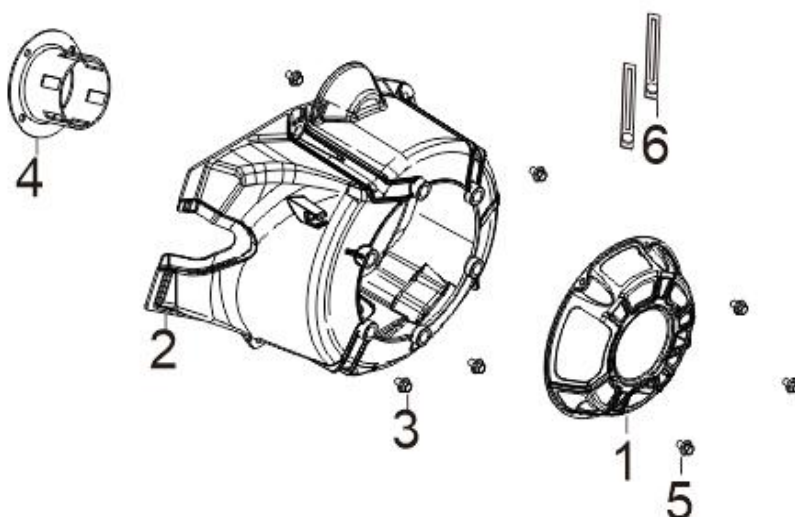
REF.NO.	PART NO	DESCRIPTION	Q'TY
E05-1	13200-Z390110-0000	Ring Assy, Piston	1
E05-2	13010-Z950110-00A0	Rod, Connecting	1
E05-3	13111-Z4A0110-00A0	Piston	1
E05-4	13121-Z010110-00A0	Pin, Piston	1
E05-5	13122-Z010110-00A0	Clip, Piston Pin	2

FIG.6 TRAIN,VALVE / CAMSHAFT SUBASSEMBLY (E06)



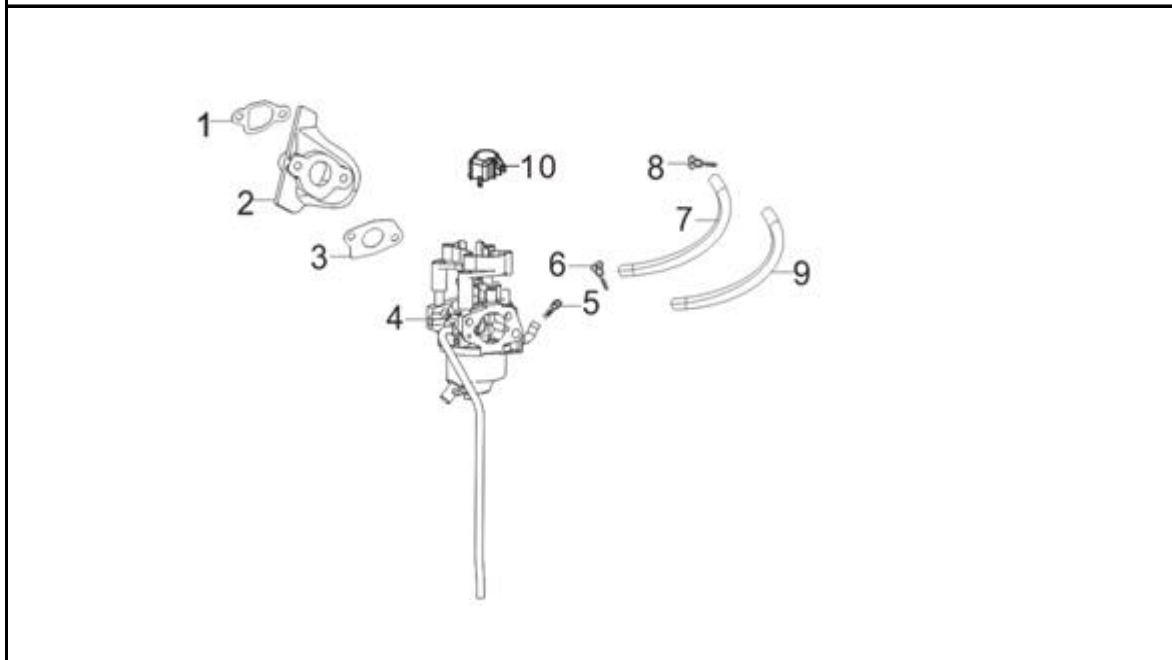
REF.NO.	PART NO	DESCRIPTION	Q'TY
E06-1	14200-Z4A0110-00A1	Camshaft Assy.	1
E06-2	12110-Z4A0110-00A0	Valves Set	1
E06-3	12101-Z1F0110-0000	Guide, Seal	1
E06-4	12103-Z030110-00A0	Spring, Valve	2
E06-5	12112-Z810210-00A0	Seat, Valve Spring	2
E06-6	12109-Z810110-00A0	Clamp, Valve Lock	4
E06-7	14081-Z040110-00A0	Tappet, Valve	2
E06-8	14071-Z950110-00A0	Lifter, Valve	2
E06-9	14310-Z950110-00A0	Rocker Subassembly, Valve	2
E06-10	14318-Z950211-00A0	Shaft Subassembly, Rocker	2
E06-11	12104-Z4A0110-00A0	ROTator, Valve	2

FIG.6 STARTER,RECOIL (E07)



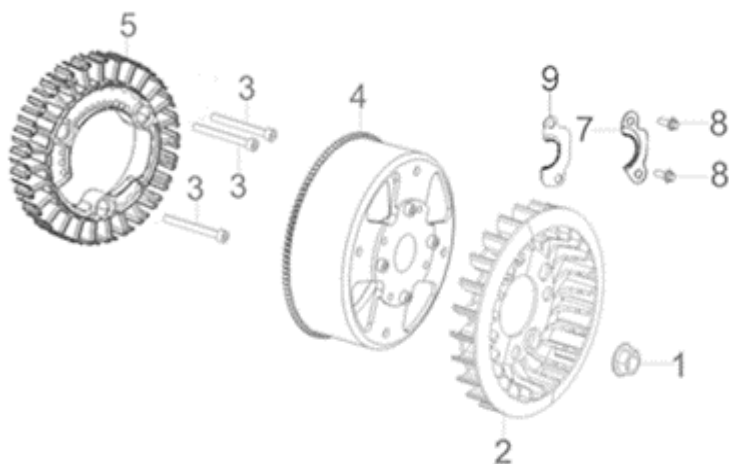
REF.NO.	PART NO	DESCRIPTION	Q'TY
E07-1	28200-Z4W0110-H6A0	Starter Assy, Recoil	1
E07-2	28110-Z4W0210-00A0	Shroud	1
E07-3	90001-0616-01A0	Bolt	7
E07-4	28002-Z430310-0000	Pulley, Starter	1
E07-5	90251-0608-03A0	Bolt Or Screw And Washer Assembly	3
E07-6	90684-Z030120-00A0	Wire Clip	2

FIG.7 CARBURETOR ASSY.(E09)



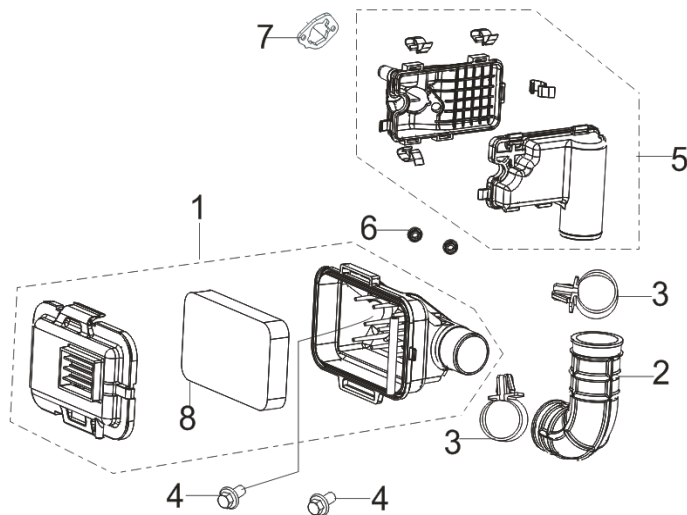
REF.NO.	PART NO	DESCRIPTION	Q'TY
E09-1	16002-Z950110-00A0	Gasket, Carburetor Insulator	1
E09-2	16003-Z1D0110-00A0	Plate, Carburetor Insulator	1
E09-3	16001-Z010110-00A0	Carburetor Seal Gasket	1
E09-4	16100-Z4W0110-00A0	Carburetor Assy.	1
E09-5	16652-Z800110-00A0	Strainer, Fuel	1
E09-6	90685-D090-0EA0	Pipe Clamp	1
E09-7	90686-YDM0110-00M1	Tube, Fuel	1
E09-8	90685-D080-0EA0	Pipe Clamp	1
E09-9	30431-YBW0210-0000	Jacket, Rubber	1

FIG.10 FLYWHEEL /IMPELLER /STARTER PULLEY /IGNITION COIL (E10)



REF.NO.	PART NO	DESCRIPTION	Q'TY
E10-1	13501-Z010110-00A0	Nut, Flywheel	1
E10-2	19352-Z4W0210-00A0	Impeller	1
E10-3	90001-0655-01A0	Hexagon Socket Flange Face Bolt - Small Series	3
E10-4	30110-YFN0210-00A0	Case Subassembly, Magneto Rotor	1
E10-5	30120-YN90110-00A0	Stator Subassembly, Magneto	1
E10-7	30002-Z1D0110-00A0	Clamp, Magneto Wiring	1
E10-8	90001-0520-01A0	Bolt	2
E10-9	54066-YE50210-09A0	Tension Disc	1

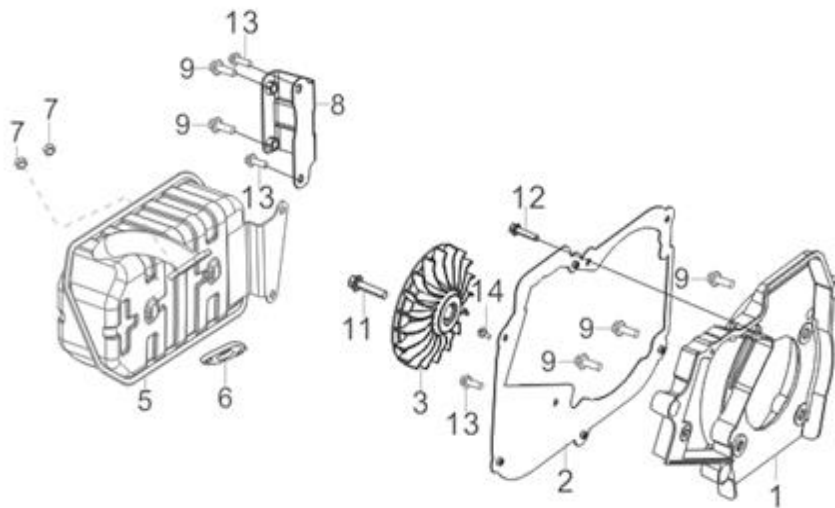
FIG.8 CLEANER, AIR (F01)



REF.NO.	PART NO	DESCRIPTION	Q'TY
F01-1	17100-Z1D0112-00A1	Air Cleaner	1
F01-2	12510-Z1D0110-00A1	Tube, Intake	1
F01-3	12081-Z1D0110-00A0	Intake Pipe Hoop	2
F01-4	90001-0625-01A0	Bolt	2
F01-5	17400-Z1D0112-00A0		1
F01-6	90305-0600-31A0	Hexagon Nut With Flange	2

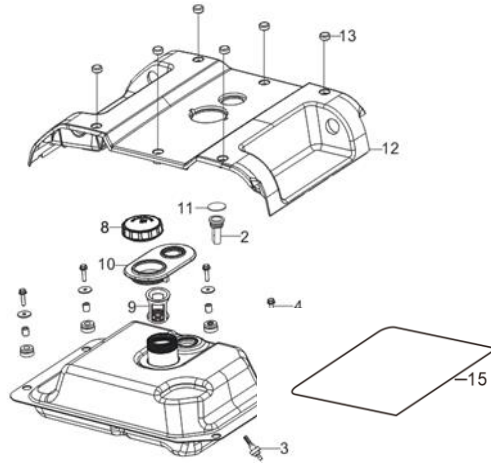
F01-7	17001-Z1D0110-00A0	Air Cleaner Seal Gasket	1
F01-8	17151-Z1D0110-0000	Element, Air Cleaner	1

FIG.9 MUFFLER ASSY.(F02)



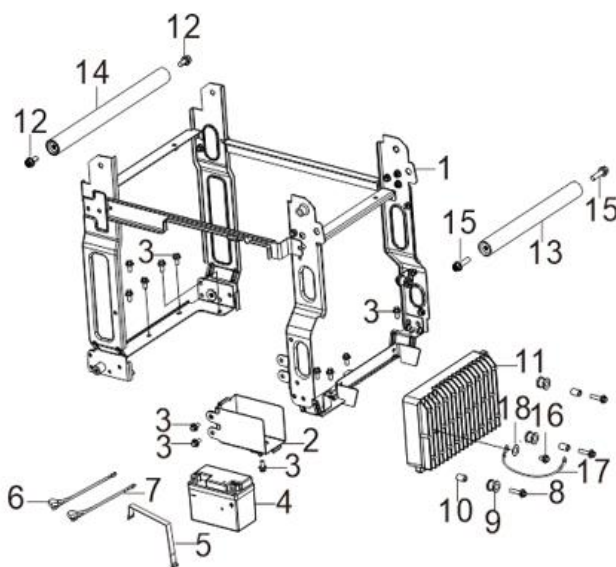
REF.NO.	PART NO	DESCRIPTION	Q'TY
F02-1	28110HYFN0110-Q2A0	Shroud	1
F02-2	18299HYFN0110-00A0	Muffler Outer Cover Mounting Bracket	1
F02-3	19352-Z5V0210-00A0	Impeller	1
F02-5	18100-YFN0110-00A0	Muffler Assy.	1
F02-6	18001-Z950110-00A0	Gasket, Exhaust Outlet	1
F02-7	90303-0800-31A0	Type 1 Hexagon Nut	2
F02-8	18030HYFN0110-H7A0	Bracket,Muffler	1
F02-9	90001-0816-01A0	Bolt	5
F02-11	90001-0820-01A0	Bolt	1
F02-12	90007-0635-A1A0	Bolt	1
F02-13	90007-0612-A1A0	Bolt	2
F02-14	90124-Y9T0310-00A0	Self-Tapping Screw	1

FIG.10 TANK ASSY, FUEL (F03)



REF.NO.	PART NO	DESCRIPTION	Q'TY
F03-1	16620-YBS0110-H7AP	Fuel Tank	1
F03-2	37200-YBW0110-0000	Leveler Assy, Oil	1
F03-3	16680-Y2P0110-00A0	Outlet Subassembly, Fuel Tank Oil	1
F03-4	90001-0620-01A0	Bolt	4
F03-5	90408-Y020310-00A0	Flat Washer - Grade A	4
F03-6	90683-Y020110-00A0	Bush	4
F03-7	16601-Y020120-0000	Sleeve, Fuel Tank Rubber	4
F03-8	16730-YBR0210-Q2A0	Cover, Fuel Tank	1
F03-9	16652-Y9T0110-00A0	Strainer, Fuel	1
F03-10	16641-YBW0110-0000	Sleeve, Filling Oil Hole Rubber	1
F03-11	37205-YBW0110-0000	Opening, Oil Leverler View	1
F03-12	94230HYBW0110-Q201	Cover, Upper	1
F03-13	90722-YBW0110-00A0	Plug, End	6
F03-14	30431-Y020110-0000	Jacket, Rubber	1
F03-15	82153-YFN0110-00A0	Scald Resistant Film	1

FIG.12 FRAME (F04)



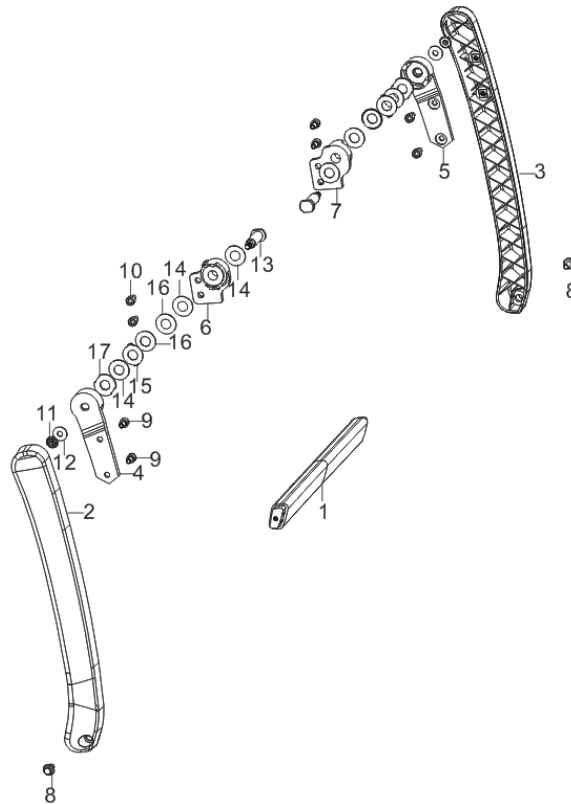
REF.NO.	PART NO	DESCRIPTION	Q'TY
F04-1	51100-YBW0320-H7A0	Frame Assy, Engine	1
F04-2	31130-YBW0210-H6A0	Case, Battery	1
F04-3	90001-0612-01A0	Hexagon Socket Flange Face Bolt - Small Series	3
F04-4	31110-Y030610-00A0	Battery	1
F04-5	31115-YBW0110-0000	Band, Battery	1
F04-6	31112HY1N0210-0000	Wire, Anode	1
F04-7	31114HY5R0110-0000	Wire, Cathode	1
F04-8	90001-0625-01A0	Hexagon Socket Flange Face Bolt - Small Series	3
F04-9	30431-Y2P0110-0000	Jacket, Rubber	3
F04-10	90683-Y2P0210-00A0	Bush	3
F04-11	30043-YN90410-00A0	Invertor	1
F04-12	90115-0830-03	Hexagon Socket Flange Face Bolt - Small Series	2
F04-13	80153HYBW0110-H8A0	Handle	1
F04-14	80153HYBW0210-H8A0	Handle	1
F04-15	90115-0830-03	Hexagon Socket Flange Face Bolt - Small Series	2
F04-16	90103-0408-51A0	Cross-Recessed Pan Head Screw	1
F04-17	30009-YBW0110-00A0	Grounding	1
F04-18	90408-0500-E1A0	Flat Washer - Grade A	1

FIG.16 (F05)



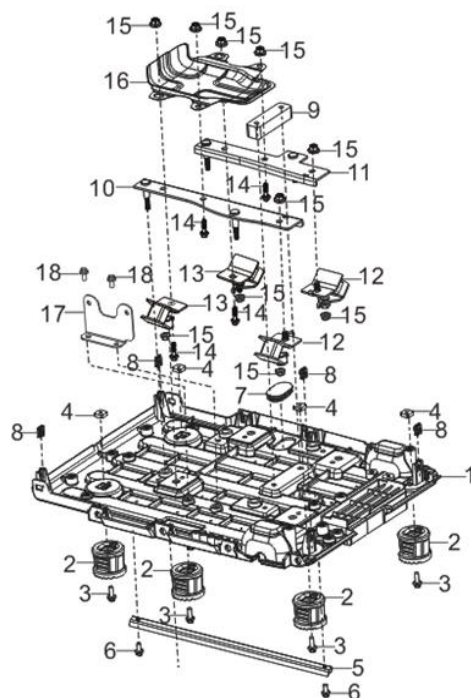
F05-26	31234-Y020110-0000	Protector, Overcurrent	1
F05-27	35619-Y2V0110-0000	Socket Subassembly, D.C	1
F05-28	35629-Y2V0110-0000	Terminal Subassembly, Grounding	1
F05-29	35614-Y020110-0000	Socket Subassembly, Power Supply	2
F05-30	16080-YBW0110-0000	Handle Subassembly, Choke	1
F05-32	90685-D095-0EA0	Pipe Clamp	1

FIG.18 HANDEL (F08)



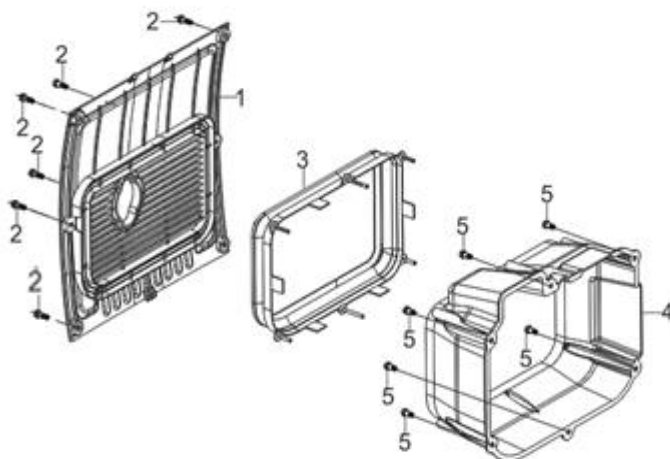
REF.NO.	PART NO	DESCRIPTION	Q'TY
F08-1	54913-YG90110-Q2A0	Rotating Beam	1
F08-2	54912HYBW0111-Q2A0	Rotating Arm	1
F08-3	54912HYBW0211-Q2A0	Rotating Arm	1
F08-4	54122-YBW0111-H7A0	Handle Tube Connecting Seat 2	1
F08-5	54122-YBW0211-H7A0	Handle Tube Connecting Seat 2	1
F08-6	54113-YBW0121-00A0	Seat, Handle Tube Connecting	1
F08-7	54113-YBW0221-00A0	Seat, Handle Tube Connecting	1
F08-8	90001-0625-01A0	Bolt	2
F08-9	90001-0610-03	Bolt	4
F08-10	90001-0616-01A0	Bolt	4
F08-11	90341-Y2D0210-00A0	Nylon Nut	2
F08-12	90408-Y840210-00A0	Flat Washer - Grade A	2
F08-13	26231-YBW0110-00A0	Stationary Shaft	2
F08-14	90412-YBW0210-01A0	Flat Washer	6
F08-15	42017-YG80110-09A0	Gasket, Locking	2
F08-16	90419-YBW0110-H7A0	Disc Washer	4

F08-17	90412-YBW0110-Q2A0	Flat Washer	2
FIG.13 (F31)			
REF.NO.	PART NO	DESCRIPTION	Q'TY
F31-1	80092HYG80110-Q2A0	Left Housing Cover Plate	1
F31-2	90208-YB00210-0000	Hexagonal Step Bolt	4
F31-3	80091HYBW0110-Q2A0	Left Housing	1
F31-4	80095HYBW0110-Q2A0	Right Housing	1
F31-5	80096HYG80110-Q2A0	Right Appearance Cover Plate	1
F31-6	90326-Y2V0110-00A0		8
F31-7	90208-YB00110-0000	Hexagonal Step Bolt	8
F31-8	16601-Y2V0210-0000	Sleeve, Fuel Tank Rubber	4
F31-9	90001-0612-01A0	Bolt	8
F31-10	28004-YB00110-Q2A0	Guide Subassembly, Starting Rope	1
F31-11	90104-0512-53A0	Cross Recessed Countersunk Head Screw (Grade 4.8)	1
F31-12	28210-Y2V0110-00A0	Handle, Recoil Strater Cable	1
F31-13	51197HYG80110-Q2A0	Right Access Door	1
F31-14	80105-YB00110-Q2A0	Spark Plug Access Door Knob	1
F31-15	24329-YCF0110-Q2A0	Stopper	1
F31-16	37073-Y2V0110-00A0	Spring Clamp	1
F31-17	44110-Y2P0110-Q200	Wheel, Front	2
F31-18	42002-YBW0110-0000	Shaft, Rear Wheel	2
F31-19	17199-YE50110-01A0	Clip Nut	16
FIG.14 (F32)			



REF.NO.	PART NO	DESCRIPTION	Q'TY
F32-1	51143HYFN0110-Q2A0	Plate, Bottom	1
F32-2	51014HYBW0110-0000	Seat, Engine Frame Shock Absorption	4
F32-3	90001-0616-01A0	Bolt	4
F32-4	90326-Y2V0110-00A0		4
F32-5	51103-YBW0110-H7A0	Bottom Plate Reinforcement Plate	1
F32-6	90001-0612-01A0	Bolt	2
F32-8	17199-YE50110-01A0	Clip Nut	4
F32-10	51188HYBW0110-H6A0	Dynamic Left Support	1
F32-11	51189HYFN0110-H6A0	Dynamic Right Support	1
F32-12	51009HY2P0110-0000	Cushion, Engine Frame Left	2
F32-13	51011HY2P0210-0000	Cushion, Engine Frame Right	2
F32-14	90001-0840-01A0	Bolt	4
F32-15	90305-0800-31A0	Hexagon Nut With Flange	10
F32-16	19306-YFN0110-0100	Deflector, Crankcase Air	1
F32-17	17003HYBW0110-H7A0	Support, Atr Cleaner	1
F32-18	90001-0612-01A0	Bolt	2

FIG.15 (F33)



REF.NO.	PART NO	DESCRIPTION	Q'TY
F33-1	18002HYFN0110-Q2A0	Cover, Muffler Side	1
F33-2	90208-YB00410-0000	Hexagonal Step Bolt	6
F33-3	18018-YHF0110-Q200	Muffler Insulator Rubber 2	1
F33-4	18130HYFN0110-Q2A0	Muffler Outer Cover	1
F33-5	90208-YB00210-0000	Hexagonal Step Bolt	6

