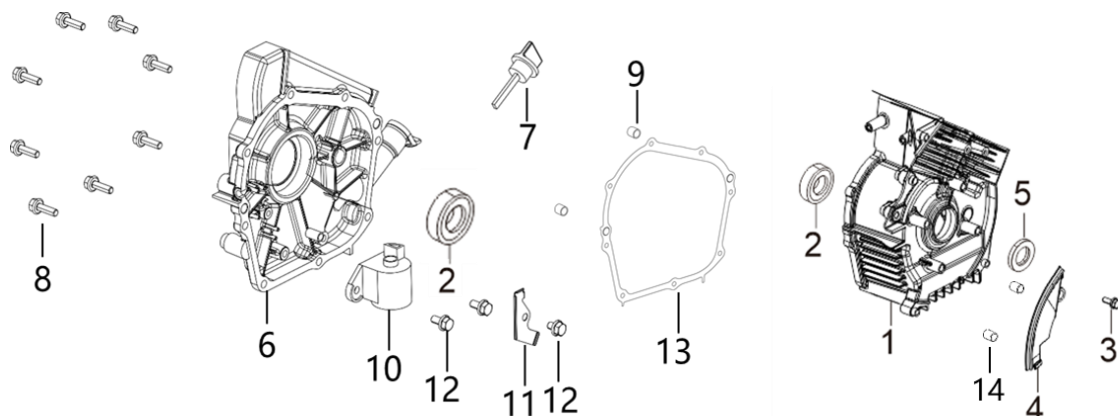
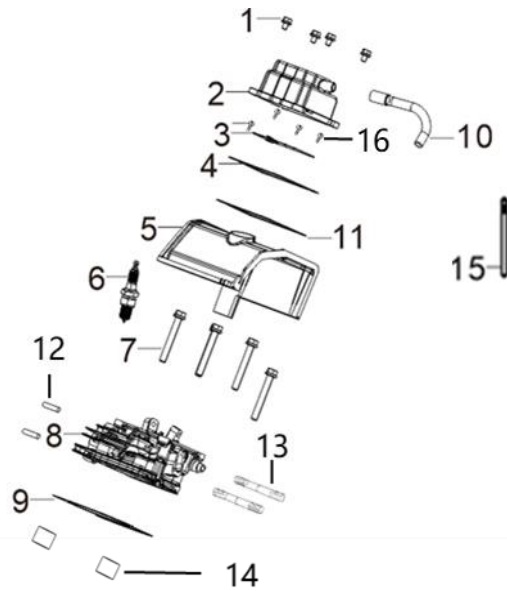


70365: GRN3500IS



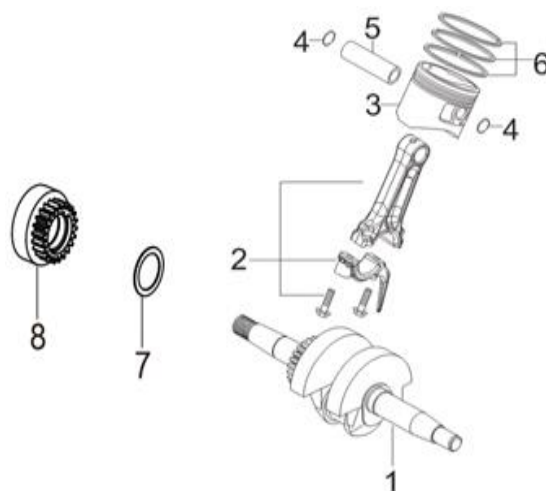
REF.NO.	PART NO	DESCRIPTION	REQD.
E01-1	11310-Z5H0111-00A0	Crankcase Subassembly.	1
E01-2	90547-0205-CLAT	Deep Groove Ball Bearing - P53	2
E01-3	90007-0620-A1A0	Bolt	1
E01-4	19306-Z5H0110-00A0	Deflector, Crankcase Air	1
E01-5	90682-Z300110-00A0	Seal, Oil	1
E01-6	11411-Z5H0110-00A0	Cover, Crankcase	1
E01-7	15010-Z5H0110-Q5A0	Dipstick Subassembly, Oil	1
E01-8	90007-0620-A1A0	Bolt	8
E01-9	90502-0812-00A0	Position Pin	2
E01-10	37060-Z800110-00A0	Sensor, Engine Oil	1
E01-11	54066-Z800110-00A0	Tension Disc	1
E01-12	90007-0612-A1A0	Bolt	3
E01-13	11001-Z5H0110-00A0	Gasket, Crankcase	1
E01-14	90502-0812-00A0	Position Pin - Type A	2

FIG.2 HEAD SUBASSEMBLY, CYLINDER / PLUG, SPARK (E02)



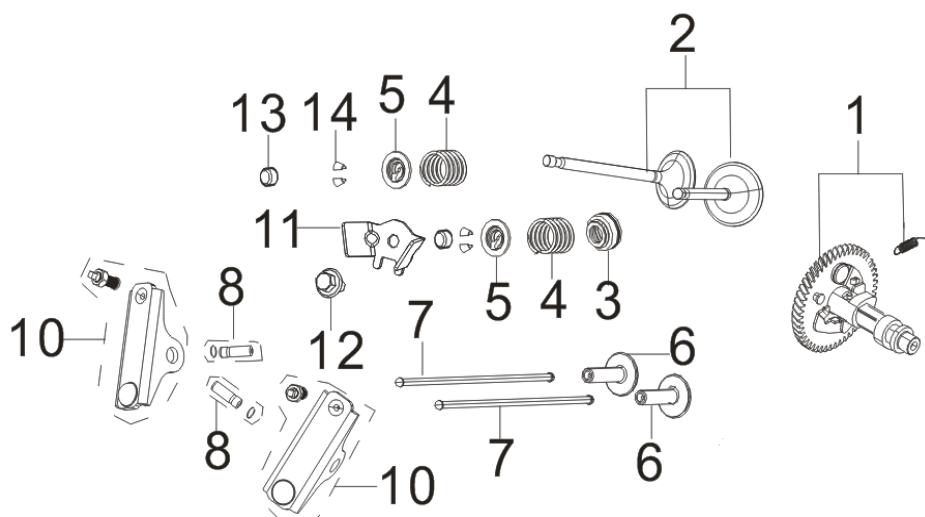
REF.NO.	PART NO	DESCRIPTION	REQD.
E02-1	90007-0616-A1A0	Bolt	4
E02-2	12410-Z2X0110-0B00	Cover Subassembly, Cylinder Head	1
E02-3	11320-Z2X0110-0000	Stop Engine Piece Subassembly	1
E02-4	11332-Z2X0110-0000	Gasket, Breath Groove	1
E02-5	12014-Z5H0111-00A0	Cylinder Head Wind Deflector	1
E02-6	30010-Z010110-00A0	Plug, Spark	1
E02-7	12003-Z010110-00A0	Cylinder Head Bolt	4
E02-8	12140-Z5H0111-00A0	Head Subassembly, Cylinder	1
E02-9	12131-Z5H0210-00A0	Gasket, Cylinder Head	1
E02-10	17004-Z2X0110-00A0	Tube, Breather	1
E02-11	12004-Z2X0110-0000	Cylinder Head Cover Gasket	1
E02-12	90204-Z020310-00A0	Stud Bolt (Bm=2D)	2
E02-13	90204-Z800210-00A0	Stud Bolt (Bm=2D)	2
E02-14	90502-1014-00A0	Position Pin	2
E02-15	90684-Z030120-00A0	Wire Clip	1
E02-16	90103-0308-51A0	Cross-Recessed Pan Head Screw	4

FIG.3 RING SET,OIL / ROD,CRANKSHAFT CONNETING (E03)



REF.NO.	PART NO	DESCRIPTION	REQD.
E03-1	13300-Z5H0110-00A0	Crankshaft Assy.	1
E03-2	13010-Z5H0110-00A0	Rod, Connecting	1
E03-3	13111-Z5H0111-00A0	Piston	1
E03-4	13122-Z350110-00A0	Clip, Piston Pin	2
E03-5	13121-Z810110-00A0	Pin, Piston	1
E03-6	13200-Z1D0110-0000	Ring Assy, Piston	1
E03-7	90408-Z030210-00A0	Flat Washer - Grade A	1
E03-8	14014-Z2R0110-00A0	Gear, Timing Drive	1

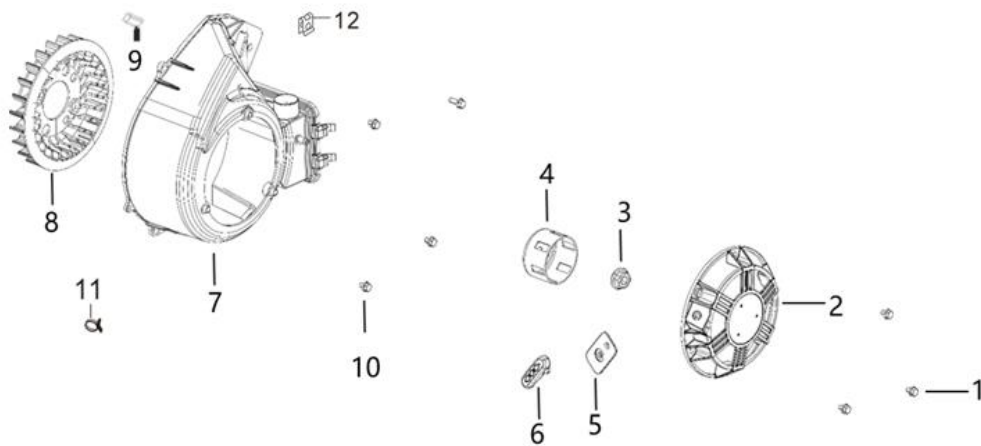
FIG.4 TRAIN, VALVE / CAMSHAFT SUBASSEMBLY (E04)



REF.NO.	PART NO	DESCRIPTION	REQD.
E04-1	14200-Z5H0110-00A0	Camshaft Assy.	1
E04-2	12110-Z5H0110-00A0	Valves Set	1
E04-3	12101-Z1F0110-0000	Guide, Seal	1
E04-4	12103-Z030110-00A0	Spring, Valve	2
E04-5	12112-Z810210-00A0	Seat, Valve Spring	2

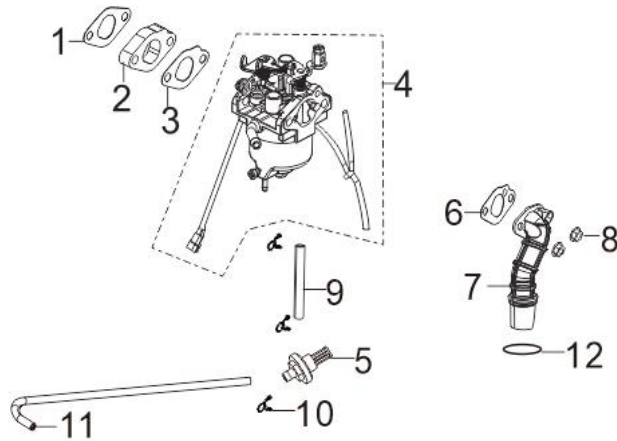
E04-6	14081-Z2R0110-00A0	Tappet, Valve	2
E04-7	14071-Z440110-00A0	Lifter, Valve	2
E04-8	14318-Z5H0110-00A0	Shaft Subassembly, Rocker	2
E04-10	14310-Z5H0110-00A0	Rocker Subassembly, Valve	2
E04-11	12419-Z2X0110-0000	Cylinder Head Cover Pin Limit Plate	1
E04-12	90001-0510-01A0	Bolt	1
E04-14	12109-Z810110-00A0	Clamp, Valve Lock	4

FIG.5 STARTER,RECOIL (E05)



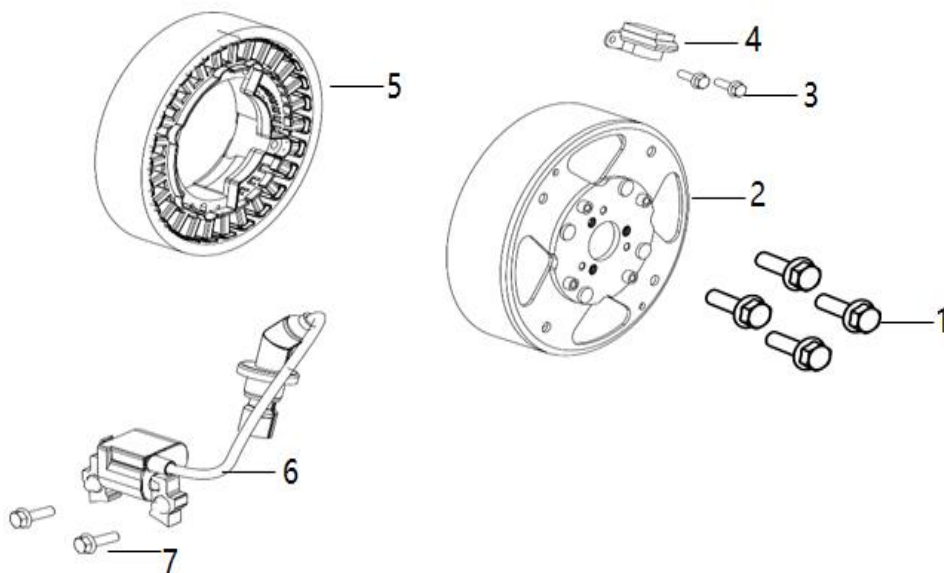
REF.NO.	PART NO	DESCRIPTION	REQD.
E05-1	90007-0612-A1A0	Bolt	3
E05-2	28200-Z4W0110-H6A0	Starter Assy, Recoil	1
E05-3	13501-Z010110-00A0	Nut, Flywheel	1
E05-4	28002-Z430310-00A0	Pulley, Starter	1
E05-5	28004-YB00110-Q2A0	Guide Subassembly, Starting Rope	1
E05-6	28210-Y2V0110-00A0	Handle, Recoil Strater Cable	1
E05-7	28110-Z5H0111-00A0	Shroud	1
E05-8	19352-Z150111-00A0	Impeller	1
E05-9	90722-Z010610-00A0	Plug, End	1
E05-10	90007-0616-A1A0	Bolt	4
E05-12	90804-Z800210-00A0	Stop Detent	1

FIG.6 CARBURETOR ASSY. (E06)



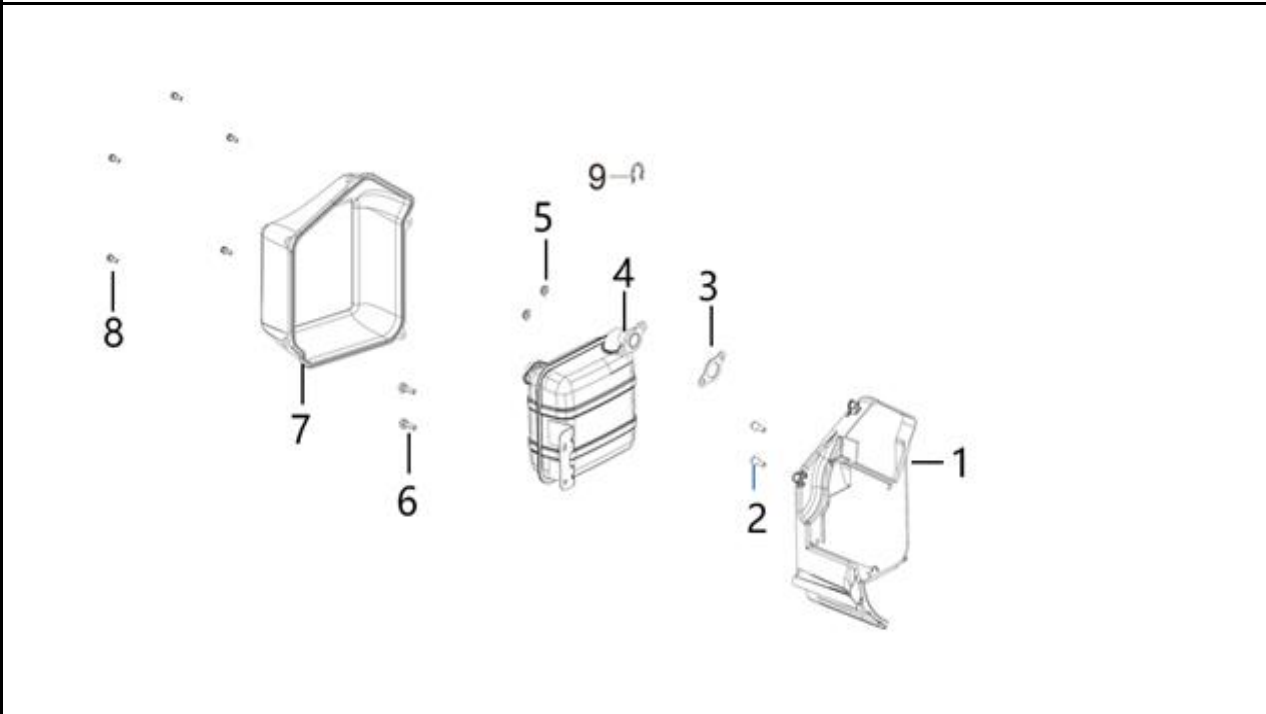
REF.NO.	PART NO	DESCRIPTION	REQD.
E08-1	16002-Z5H0110-00A0	Gasket, Carburetor Insulator	1
E08-2	16003-Z5H0110-00A0	Plate, Carburetor Insulator	1
E08-3	16001-Z5H0110-00A0	Carburetor Seal Gasket	1
E08-4	16100-Z5H0110-00A0	Carburetor Assy.	1
E08-5	16510-YEU0110-00A0	Strainer, Fuel	1
E08-6	17001-Z5H0110-00A0	Air Cleaner Seal Gasket	1
E08-7	17110-Z5H0110-00A0	Air Cleaner Intake Duct Assembly	1
E08-8	90305-0600-31A0	Hexagon Nut With Flange	2
E08-9	90686-YGA0410-00M0	Tube, Fuel	1
E08-10	90685-D095-0EA0	Pipe Clamp	3
E08-11	90686-YGA0310-00M0	Tube, Fuel	1
E08-12	37073-Z5H0110-00A0	Spring Clamp	1

FIG.7 ROTOR/STATOR (E07)



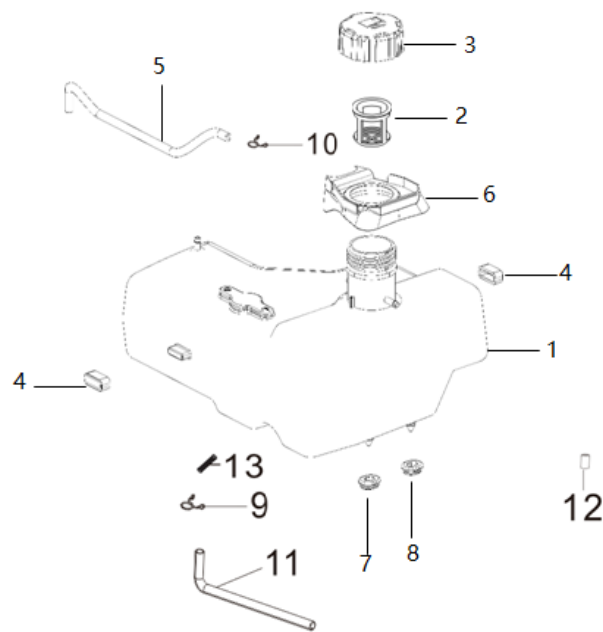
REF.NO.	PART NO	DESCRIPTION	REQD.
E07-1	90001-0650-01A0	Bolt	4
E07-2	30110-YGA0111-00A0	Case Subassembly, Magneto Rotor	1
E07-3	90007-0516-A1A0	Bolt	2
E07-4	30130-Z1D0110-00A0	Trigger Assy.	1
E07-5	30120-YN10110-00A0	Stator Subassembly, Magneto	1
E07-6	30400-Z4W0310-00A0	Coil, Ignition	1
E07-7	90007-0620-A1A0	Bolt	2

FIG.8 MUFFLER ASSY. (F01)



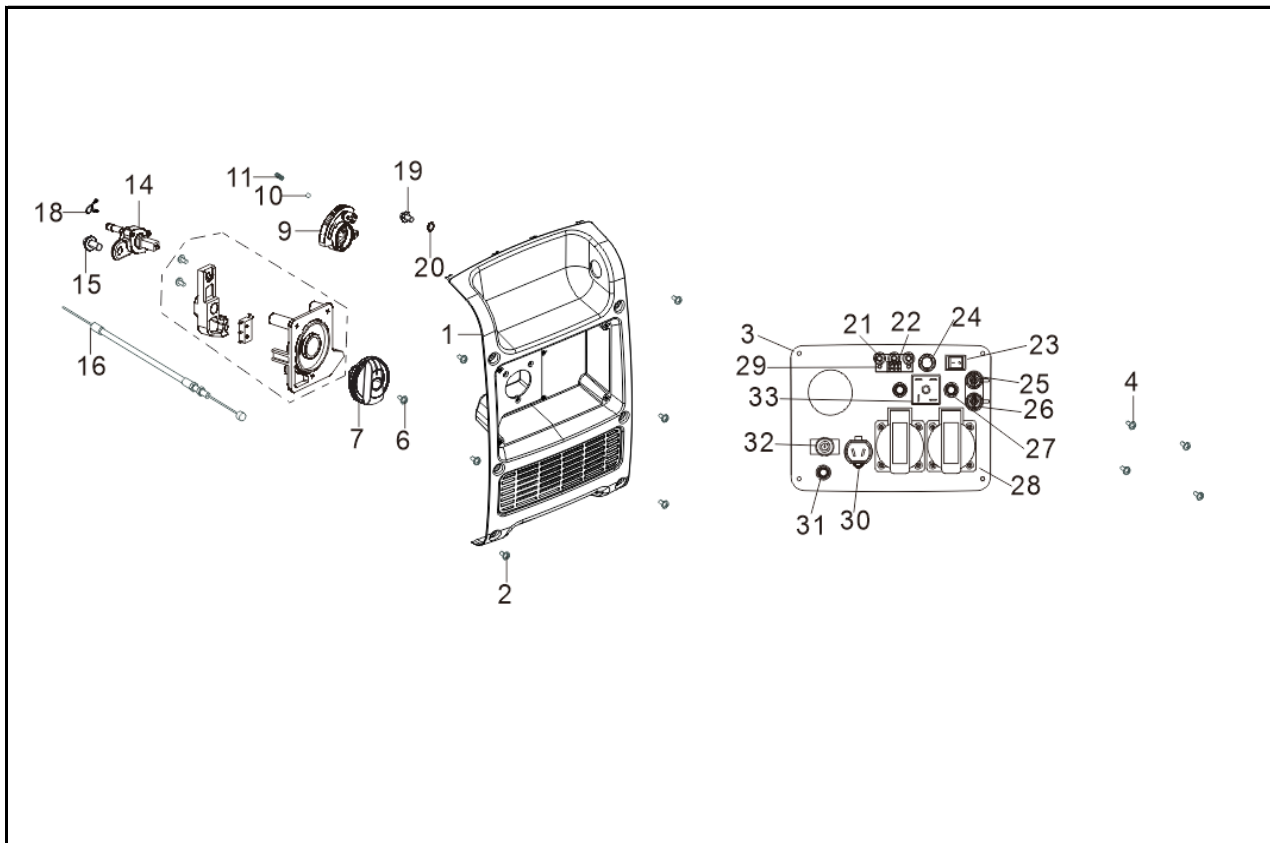
REF.NO.	PART NO	DESCRIPTION	REQD.
F01-1	18109-Z5H0111-00A0	Shroud, Muffler	1
F01-2	90007-0616-A1A0	Bolt	2
F01-3	18001-Z5H0110-00A0	Gasket, Exhaust Outlet	1
F01-4	18100HYGA0111-00A0	Muffler Assy.	1
F01-5	90303-0600-31A0	Type 1 Hexagon Nut	2
F01-6	90007-0620-A1A0	Bolt	2
F01-7	18013-Z5H0111-00A0	Muffler Cover	1
F01-8	90124-Y9T0510-00A0	Self-Tapping Screw	5
F01-9	90740-Z900110-00A0	Collar	1

FIG.9 TANK, FUEL (F02)



REF.NO.	PART NO	DESCRIPTION	REQD.
F02-1	16620-YGA0111-Q2A0	Fuel Tank	1
F02-2	16652-YEN0110-00A0	Strainer, Fuel	1
F02-3	16730-YJD0110-Q2A0	Cover, Fuel Tank	1
F02-4	90683-Y2V0110-00A0	Bush	2
F02-5	90729-YGA0110-00A0	Duct, Air	1
F02-6	16641-YGA0110-Q2A0	Sleeve, Filling Oil Hole Rubber	1
F02-7	16601-Y2V0210-00A0	Sleeve, Fuel Tank Rubber	1
F02-8	16601-Y2V0210-00A0	Sleeve, Fuel Tank Rubber	1
F02-9	90685-D105-0EA0	Pipe Clamp	1
F02-10	90685-D085-0EA0	Pipe Clamp	1
F02-11	90686-YGA0111-00M1	Tube, Fuel	1
F02-12	90722-Z2R0110-00A0	Plug, End	1

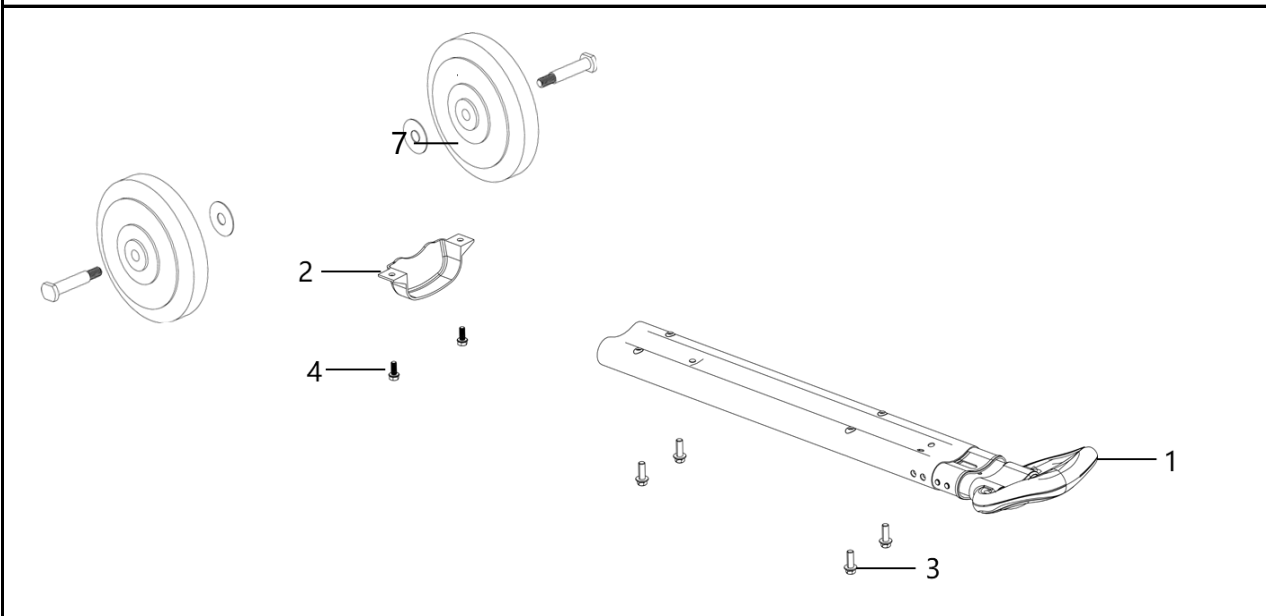
FIG.10 (F03)



REF.NO.	PART NO	DESCRIPTION	REQD.
F03-1	35680HYGA0110-Q2A0	Seat, Panel	1
F03-2	90208-YB00410-00A0	Hexagonal Step Bolt	6
F03-3	35610-YN12910-H7A0	Panel Subassembly, Control	1
F03-4	90255-0512-53	Cross-Recessed Small Pan Head Screw, Spring Washer And Flat Washer Assembly	4
F03-6	90103-0416-51A0	Cross-Recessed Pan Head Screw	1
F03-7	35643-Y2V0210-Q2A0	Knob	1
F03-8	35160-YBF0111-00A0	Switch Subassembly	1
F03-9	94111-Y2V0410-00A0	Cover Plate	1
F03-10	90543-0500-00A0	Ball, Steel	1
F03-11	16527-Y2V0210-00A0	Spring, Stopper Adjusting	1
F03-14	16750-Y2V0210-00A0	Cock Assy, Fuel	1
F03-15	90001-0614-01A0	Bolt	1
F03-16	16080-Y2V0110-00A0	Handle Subassembly, Choke	1
F03-17	90129-0416-01A0	Cross-Recessed Countersunk Head Tapping Screw	3
F03-18	90685-D080-0EA0	Pipe Clamp	1
F03-19	90001-0612-01A0	Bolt	1
F03-20	90415-0600-Z1	External Teeth Serrated Lock Washer	2
F03-21	37099-Y2V0210-0000	Indicator Mounting Base	3
F03-22	35654-Y2V0210-0000	Rain Cover Receptacle	3
F03-23	35160-Y0G0110-0000	Switch Subassembly	1
F03-24	35646-YB10110-0000	Button, Resetting	1

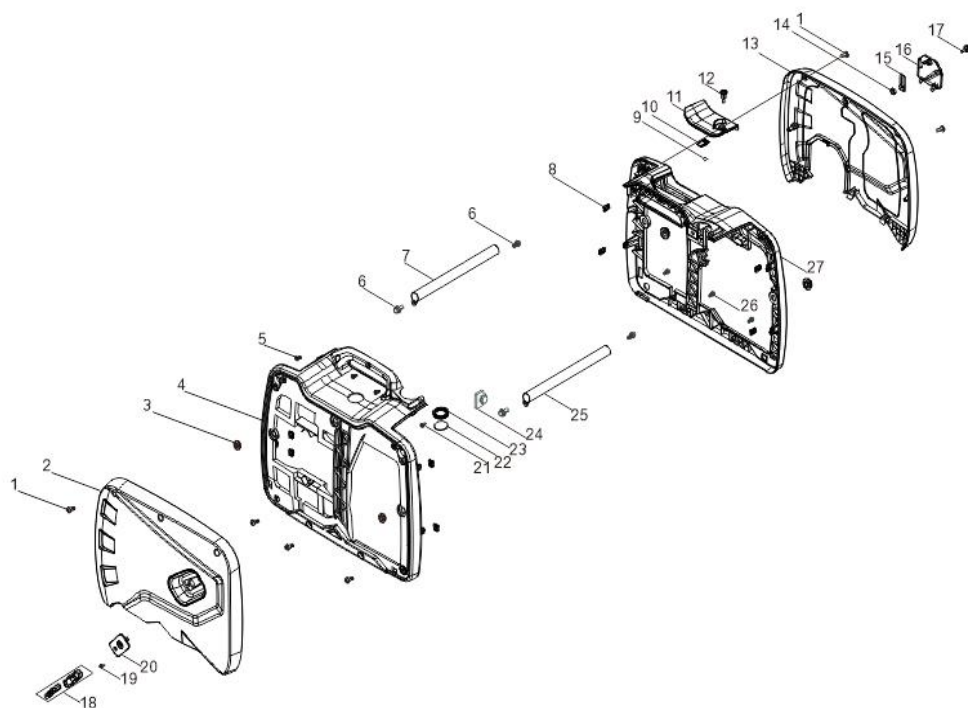
F03-25	35614-Y2P0210-0000	Socket Subassembly, Power Supply	1
F03-26	35614-Y2P0310-0000	Socket Subassembly, Power Supply	1
F03-27	31234-Y050110-0000	Protector, Overcurrent	1
F03-28	35614-Y020110-0000	Socket Subassembly, Power Supply	2
F03-29	35620-YAY0110-0000	Status Display Board Assembly	1
F03-30	35619-Y2V0110-0000	Socket Subassembly, D.C	1
F03-31	35629-Y2V0110-0000	Terminal Subassembly, Grounding	1
F03-32	31234-Y020110-0000	Protector, Overcurrent	1
F03-33	35621-Y020110-0000	Bridge, Rectification	1

FIG.11 TUBE ASSY, HANDLE/WHEEL ASSY, FRONT (F04)



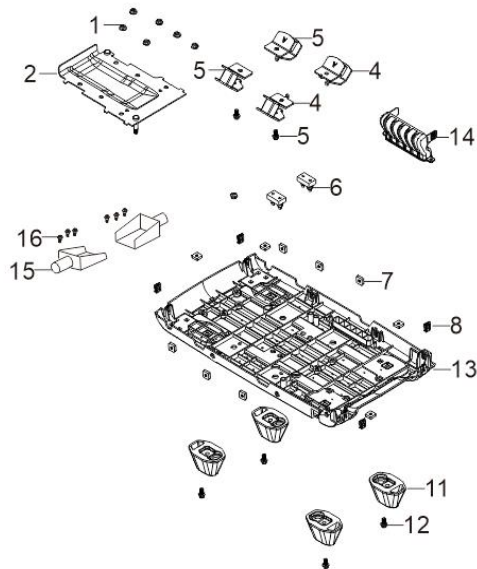
REF.NO.	PART NO	DESCRIPTION	REQD.
F04-1	54110-YGA0110-H7A0	Handle Tube Assy	1
F04-2	54113-YGA0110-Q2A0	Seat, Handle Tube Connecting	1
F04-3	90104-0516-51A0	Bolt	4
F04-4	90208-YB00210-00A0	Hexagonal Step Bolt	2
F04-5	42002-YBW0110-0000	Shaft, Rear Wheel	2
F04-6	44110-Y2P0110-Q2B0	Wheel, Front	2
F04-7	90408-Y840210-00A0	Flat Washer	2

FIG.12 (F05)



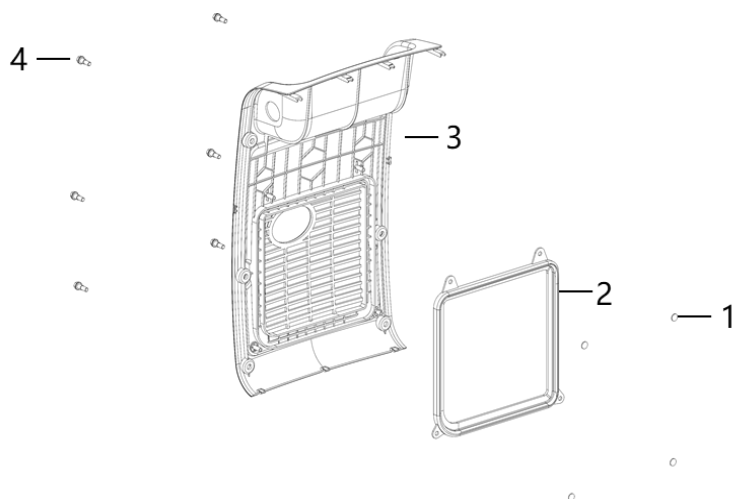
REF.NO.	PART NO	DESCRIPTION	REQD.
F05-1	90208-YB00210-00A0	Hexagonal Step Bolt	4
F05-2	90208-YB00210-00A1	Left Housing Cover Plate	1
F05-3	90208-YB00210-00A2	Sleeve, Fuel Tank Rubber	6
F05-4	90208-YB00210-00A3	Left Housing	1
F05-5	90208-YB00210-00A4	Hexagonal Step Bolt	3
F05-6	90208-YB00210-00A5	Hexagon Socket Flange Face Bolt - Small Series	4
F05-7	90208-YB00210-00A6	Handle	1
F05-8	90208-YB00210-00A7	Clip Nut	4
F05-9	90208-YB00210-00A8	Spring Clamp	1
F05-10	90208-YB00210-00A9	Stopper	1
F05-11	90208-YB00210-00A10	Spark Plug Access Door	1
F05-12	90208-YB00210-00A11	Spark Plug Access Door Knob	1
F05-13	90208-YB00210-00A12	Right Appearance Cover Plate	1
F05-14	90208-YB00210-00A13	Spring Clamp	1
F05-15	90208-YB00210-00A14	Stopper	1
F05-16	90208-YB00210-00A15	Right Access Door	1
F05-17	90208-YB00210-00A16	Spark Plug Access Door Knob	1
F05-18	90208-YB00210-00A17	Handle, Recoil Strater Cable	1
F05-19	90208-YB00210-00A18	Cross Recessed Countersunk Head Screw (Grade 4.8)	1
F05-20	90208-YB00210-00A19	Guide Subassembly, Starting Rope	1
F05-21	90208-YB00210-00A20	Self-Tapping Screw	1
F05-22	90208-YB00210-00A21	Opening, Oil Leverler View	1
F05-23	90208-YB00210-00A22	Jacket, Rubber	1
F05-24	90208-YB00210-00A23	Cushion, Engine Upper Suspension Rubber	1
F05-25	90208-YB00210-00A24	Handle	1

F05-26	90208-YB00210-00A25	Hexagonal Step Bolt	6
F05-27	90208-YB00210-00A26	Right Housing	1

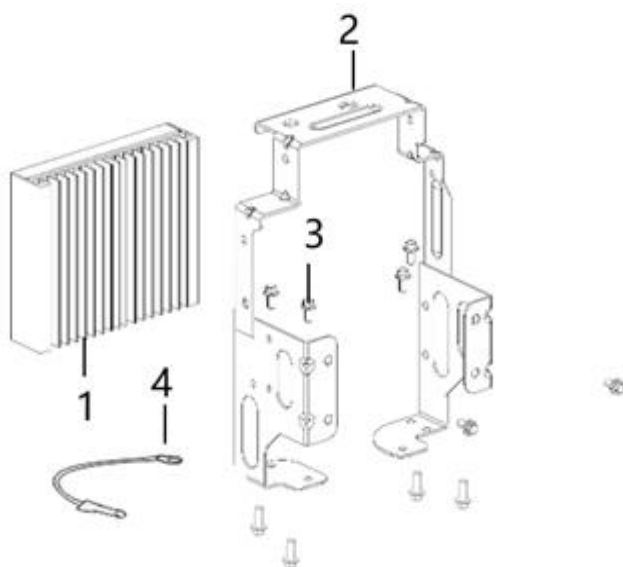
FIG.13 (F06)

REF.NO.	PART NO	DESCRIPTION	REQD. Q'TY
F32-1	90305-0800-31A0	Hexagon Nut With Flange	6
F32-2	51187HYGA0110-H7A0	Dynamic Support Assembly	1
F32-3	51009HYGA0110-00A0	Cushion, Engine Frame Left	2
F32-4	51011HYGA0110-00A0	Cushion, Engine Frame Right	2
F32-5	90001-0816-01	Hexagon Socket Flange Face Bolt - Small Series	4
F32-6	50035-Y2V0210-00A0	Buffering Pad Support	2
F32-7	90326-Y2V0110-00A0		10
F32-8	17199-YE50210-01A0	Clip Nut	4
F32-11	51014HYB00210-0000	Seat, Engine Frame Shock Absorption	4
F32-12	90001-0614-01A0	Hexagon Socket Flange Face Bolt - Small Series	4
F32-13	51143HYGA0110-Q2A0	Plate, Bottom	1
F32-14	17112-YGA0110-00A0	Tube, Air Cleaner Connecting	1
F32-15	51102-YGA0110-H7A0	Axle Fixing Plate	2
F32-16	90134-YB00110-00A0	Cross Hexagon Head Pan Bolt	6

FIG.14 (F07)



REF.NO.	PART NO	DESCRIPTION	REQD. Q'TY
F07-1	37073-Y2V0110-00A0	Spring Clamp	4
F07-2	18018-YGA0110-Q2A0	Muffler Insulator Rubber 2	1
F07-3	18002HYGA0110-Q2A0	Cover, Muffler Side	1
F07-4	90208-YB00410-0000	Hexagonal Step Bolt	6



REF.NO.	PART NO	DESCRIPTION	REQD. Q'TY
1	30043-YN10610-00A0	Invertor	1
2	30081-YGA0110-H7A0	Invertor Mounting Rack	1
3	90001-0612-01A0	Hexagon Socket Flange Face Bolt - Small Series	11
4	30009-YE50210-00A0	Grounding	1

|