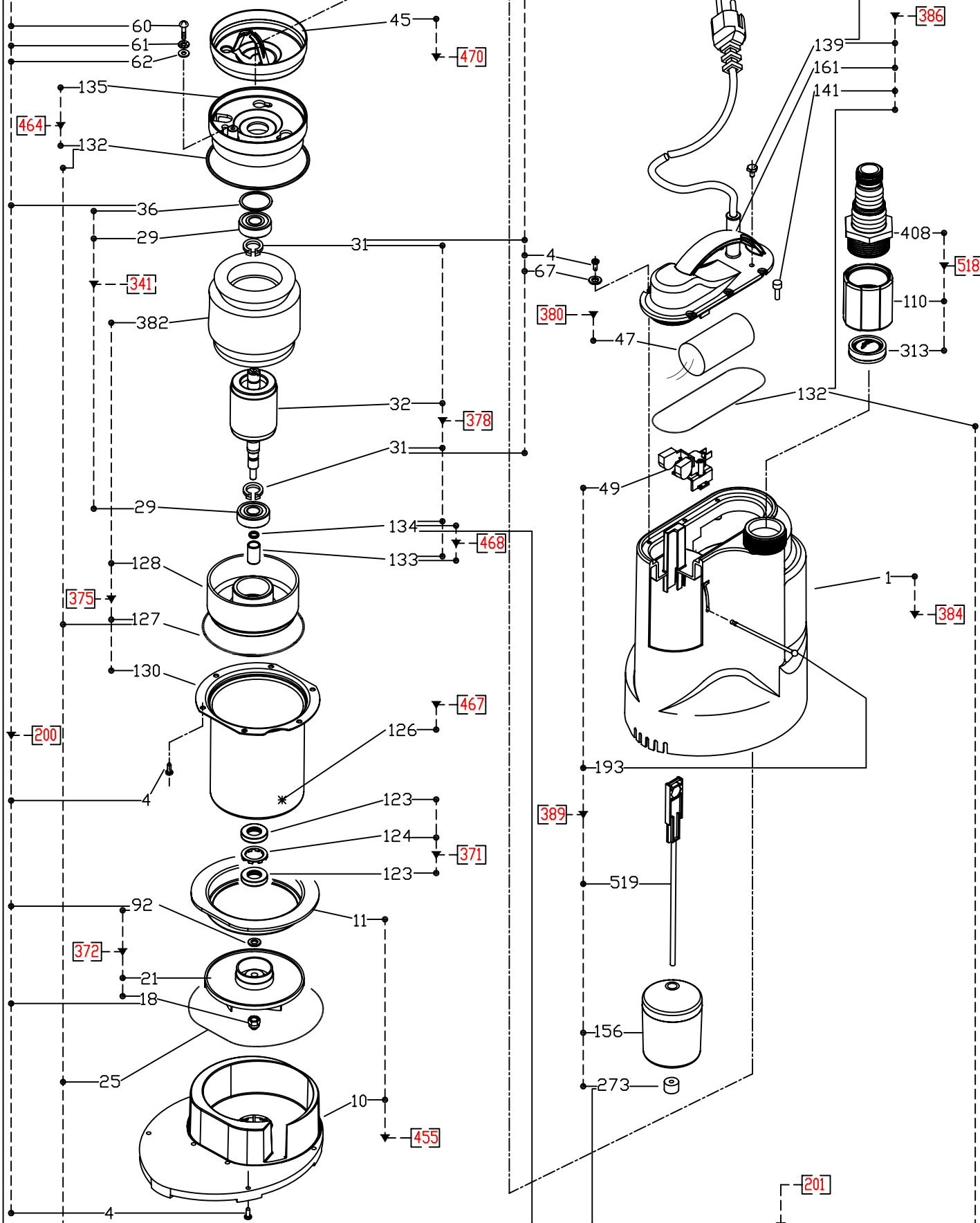


B


A

B

A



Drawn	M.Di Nasso	Title	COMPAC	Sheet	1 of 1
Approved	M.Bernacca	Date (dd/mm/yy)		Dwg #	

<div></div>				DRW. DR100019		SPARE-PARTS	
				Select language <div>English</div>		SPARE-PARTS KIT TABLE	
SPARE-PARTS				COMPAC		PUMP MODEL	
RECOMMENDED PARTS KIT	KIT REF. Nr.	KIT DESCRIPTION	COMPONENT REF. Nr.	COMPONENT DESCRIPTION		COMPAC 150	COMPAC 200
	200	BOLTS AND SCREWS KIT	60	SCREW (GROUND ~)		6999239	1 pc
			61	WASHER (GROUND SCREW TOOTHED ~)			1 pc
			62	WASHER (GROUND SCREW PLAIN ~)			1 pc
			36	RING (ELASTIC ~)			1 pc
			31	SNAP RING (PUMP SIDE ~)			2 pc
			92	WASHER			1 pc
			18	NUT (SELF-LOCKING ~)			1 pc
			139	SCREW (INSPECTION ~)			1 pc
			4	SCREW			18 pc
			67	WASHER			6 pc
*	201	Gasket Kit	25	O-RING (PUMP BODY ~)		6999234	1 pc
			134	O-RING (CERAMIC BUSHING ~)			1 pc
			193	CLIP (FLOAT SWITCH ~)			1 pc
			127	O-RING (LOWER BEARING FLANGE ~)			1 pc
			132	O-RING (MOTOR BODY ~)			2 pc
	341	BEARING KIT	29	BEARING (COUPLE OF ~)		6999240	1 pc
			36	RING (ELASTIC ~)		1 pc	
*	371	MECHANICAL SEAL KIT	123	RING (SEAL ~)		6999241	2 pc
			124	SPACER (SEAL RING ~)			1 pc
	372	HYDRAULIC KIT	18	NUT (SELF-LOCKING ~)		6997097	1 pc
92			WASHER		6997099		1 pc
21			IMPELLER				1 pc
	375	STATOR KIT	382	WINDING STATOR		6999242	1 pc
128			FLANGE (LOWER BEARING HOLDER ~)		6999243		1 pc
127			O-RING (LOWER BEARING FLANGE ~)				1 pc
130			MOTOR BODY				1 pc
	378	SHAFT + ROTOR KIT	31	SNAP RING (PUMP SIDE ~)		6999244	2 pc
32			SHAFT (ROTOR WITH ~)		6999245		1 pc
133			BUSHING (CERAMIC ~)				1 pc
134			O-RING (CERAMIC BUSHING ~)				1 pc
	380	CAPACITOR KIT	47	CAPACITOR		6999246	1 pc
	384	PUMP BODY KIT	1	PUMP BODY		6010783-47	
						6999238	1 pc
	386	MOTOR COVER KIT	139	SCREW (INSPECTION ~)		6999233	1 pc
			132	O-RING (MOTOR BODY ~)			1 pc
			141	CONNECTOR 2.5 SQMM			2 pc
			161	COVER (PUMP ~ W/POWER CABLE)			1 pc
	389	FLOAT SWITCH	49	SWITCH		6999235	1 pc
			156	FLOAT SWITCH			1 pc
			273	RING (STOP ~)			1 pc
			193	CLIP (FLOAT SWITCH ~)			1 pc
			519	FLOAT SWITCH ROD			1 pc
	455	BASE KIT	10	DIFFUSER (SUCTION ~)		6997900	1 pc
			11	DIFFUSER (DISCHARGE ~)			1 pc
	464	FLANGE (UPPER BEARING HOLDER ~) KIT	132	O-RING (MOTOR BODY ~)		6999248	1 pc
			135	FLANGE (UPPER BEARING HOLDER ~)			1 pc
	467	OIL KIT	126	LUBRICANT		658082685	
*	468	BEARING (BRONZE ~) KIT	133	BUSHING (CERAMIC ~)		6999249	1 pc
			134	O-RING (CERAMIC BUSHING ~)			1 pc
	470	CAPACITOR BOX COMPLETE KIT	45	HOLDER (CAPACITOR ~ W/O HOLES)		6999250	
	518	PIPE FITING KIT	110	SLEEVE		6010786	1 pc
			313	VALVE (CLAPET ~)			1 pc
			408	PIPE FITTING			1 pc