

Spare parts CM270/8/50W

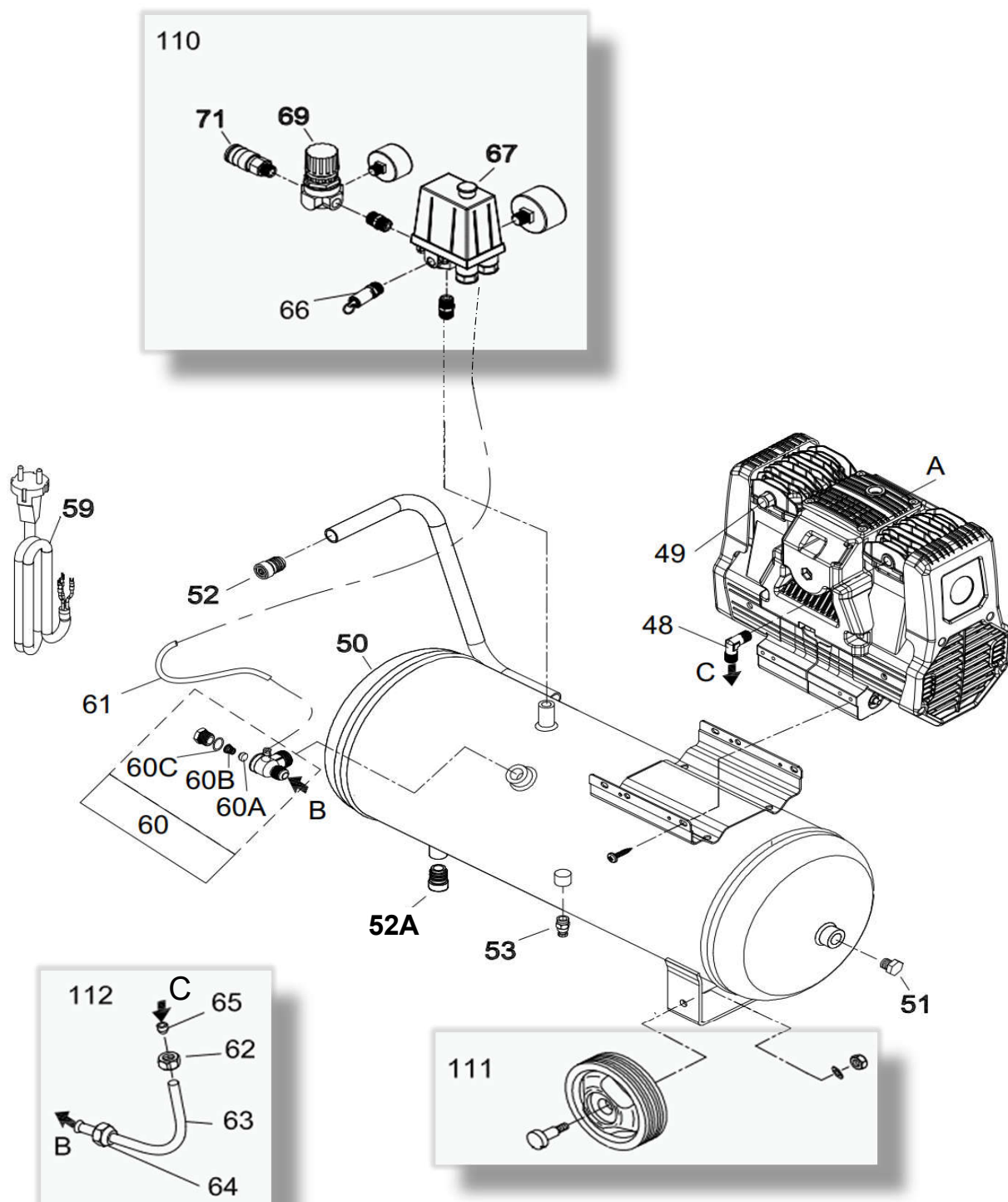
Model: CM270/8/50W
Code: . 25262
Valid from: 22/12/2020

Model: CM270/8/50W

Code: 25262

Valid from: 22/12/2020

Tav.: _____



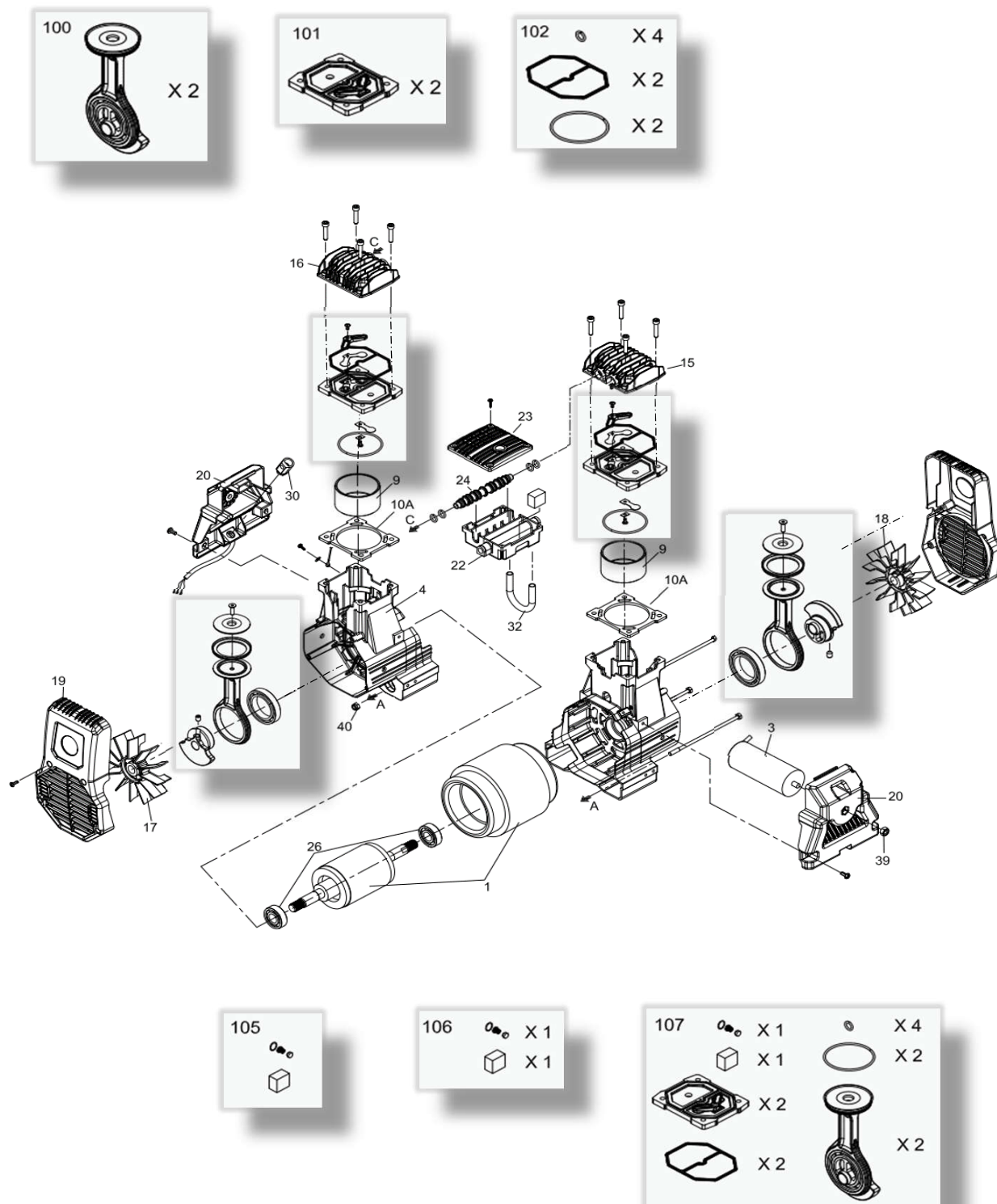
Qty = Single unit quantity

Model: CM270/8/50W

Code: 25262

Valid from: 22/12/2020

Tav.: _____



Model: CM270/8/50W

Code: 25262

Valid from: 22/12/2020

Tav.: _____

N°	Description	PN	QTY
Repairing Kits & Parts			
1	Motor	1129706477	1
3	Capacitor	1129701644	1
4	Crankcase	1127670003	2
9	Cylinder	1129705178	2
10A	Gasket	1127060313	2
15	Right Head	1127570011	1
16	Left Head	1127570012	1
17	Left Fan	1127200130	1
18	Right Fan	1127200131	1
19	Fan cover	1127150003	2
20	Cover	1127150004	2
22	Filter base	1127150044	1
23	Filter cover	1127150045	1
24	Connecting pipe	1127570101	1
26	Bearing	1120010190	2
30	Cable clip	1127500105	1
31	Filtering element	1127210448	1
32	Aluminum tube	1127230213	1
Preventive Maintenance Kits			
100	Con rod kit	1129706175	1
101	Valve plate kit	1129706169	1
102	Seal kit	1129706170	1
105	Easy kit	1129706465	1
106	Performance kit	1129706466	1
107	Heavy duty kit	1129706554	1

Qty = Single unit quantity